

THE RANCHER

A PUBLICATION OF THE FLORIDA SHERIFFS YOUTH FUND, BOYS RANCH, FLORIDA 32060 • SPRING 1983

Florida Sheriffs Youth Fund Progress Report 1982



Progress in a New Direction

Florida Sheriffs Youth Fund officials hoisted a temporary sign and elevated camping to high priority status after they purchased Camp Ticochee, a Girl Scout reservation. (See details on page 16.)

1982 in Review:

We Stretched Ourselves To Do It, But Our Progress Broke All Previous Records

Over the years the Florida Sheriffs Youth Fund has established a reputation for spending its funds wisely, effectively and conservatively.

That reputation is still as solid as a rock in spite of the fact that we went out on a limb financially in 1982 to launch the largest expansion and improvement program in our history — one that is going to cost over \$3,000,000.

We stretched ourselves, and we had to dip into our reserve funds for the first time, but we made a wise decision that enabled us to progress at a record-breaking pace. Our decision increased substantially the number of youngsters we can help, and it enhanced the quality of help we can give them.

The timing was right. . .we got amazingly low bids. . .”

New buildings were needed at the Boys Ranch, Girls Villa and Youth Ranch to keep up with the growing number of boys and girls who have been coming to us in search of a better life and a more secure future.

The timing was right in 1982. Building construction firms were hungry for business and we got amazingly low bids on our projects. At the Youth Ranch, for instance, we estimated that two buildings would cost \$1,000,000, but when bids were opened we found we could get the job done for just \$700,000.

Every building we built was a bargain. We completed Blackburn Cottage at the Boys Ranch; also Egan Cottage, the Don Genung Activity Center, and two staff residences at the Youth Ranch.



Blackburn Cottage was completed at the Boys Ranch. This was the final project in a master plan prepared many years ago.

At year's end other projects were in various stages of progress, including two Girls Villa residence cottages, maintenance buildings at the Villa and Youth Ranch, and a Youth Fund central office and warehouse located on Boys Ranch property.

A number of existing buildings are being improved and renovated, and the former Boys Ranch warehouse is being converted into an urgently needed maintenance center.

The Youth Fund Board of Directors recently voted to name this maintenance center in honor of the late Don McLeod, who was a former Sheriff of Marion County, a longtime Secretary of the Florida Sheriffs Association, a Boys Ranch founder, and the first Director of the Florida Sheriffs Bureau.

“Everyone agreed it was a good buy. . .”

Many progressive steps were taken by Youth Fund officials in 1982, but none more important than the pur-

chase of a campsite for a year 'round camping program

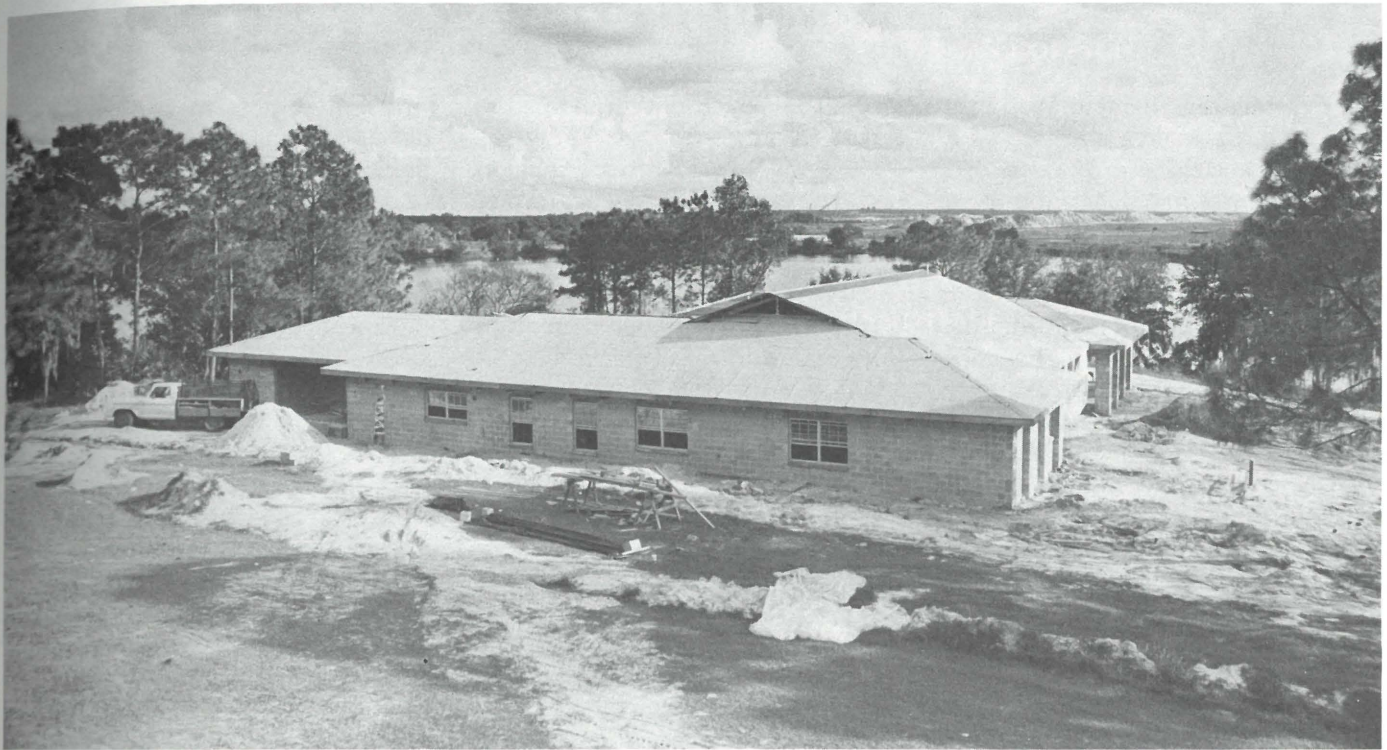
Camp Ticochee, a 132-acre Girl Scout reservation located 15 miles north of DeLand, was purchased on November 17, 1982, and everyone agreed it was a good buy. The Youth Fund was able to acquire the well-equipped facility for \$325,000.

The wooded site includes a small lake, a swimming pool, three areas for tent camping, a large dining hall, staff quarters, administrative office space, and other facilities that are ideal for our proposed camping program.

The name has been changed from Camp Ticochee to Florida Sheriffs Youth Camp, and preparations have begun to open for business early in 1983.

“... for youngsters who have difficulty adjusting. . .”

A wilderness-type camp will be operated throughout the year for youngsters who have difficulty adjusting to the structured environ-



Two more residence cottages were under construction at the Girls Villa in 1982.

ments at the Boys Ranch and Youth Ranch. It will give them a beneficial change of pace so they can return to the residence centers from which they came with a new perspective and a confident attitude.

From time to time new enrollees will be assigned to the Youth Camp temporarily to prepare them for the more exacting standards they will encounter at the Boys Ranch and Youth Ranch.

Summer camping sessions will also be held at the Youth Camp for youngsters who have not been admitted to our residential care centers, but who urgently need guidance and constructive experiences. These sessions will be a continuation of the summer camps the Youth Fund held in 1981 and 1982 on an experimental basis. We expect an enrollment of 500 in 1983.



“... the 25th Anniversary... an important milestone that was widely publicized...”

1982 was the year we celebrated the 25th Anniversary of the Boys Ranch — an important milestone that was widely publicized with rent-free billboard ads, thousands of balloons, posters, television and radio commercials, speeches, interviews and newspaper articles.

Governor Bob Graham signed a proclamation designating October 2,

1982, to be observed as Florida Sheriffs Boys Ranch Day throughout the state.

The Florida Legislature passed a resolution commending Florida's Sheriffs for 25 years of success in developing the Boys Ranch and its satellite institutions.

The U.S. Senate and House of Representatives also passed a resolution praising Sheriffs for establishing the Boys Ranch, and the citizens of Florida for giving the Boys Ranch generous financial support.

A delegation of Sheriffs and Youth

1982 in Review:

Fund youngsters went to Washington, D.C., to receive copies of the resolution and share lunch with Florida's congressional delegation in a capitol dining room. The trip was paid for by J.P. Hall, Jr., Green Cove Springs banker who inherited his interest in the Boys Ranch from his father, the late J.P. Hall, Sr. The elder Hall served as Sheriff of Clay County and was a Boys Ranch founder.

A three-day celebration at the Boys Ranch on October 1, 2, and 3, brought the anniversary observance to a rousing climax. The festivities included an anniversary address by

Lieutenant Governor Wayne Mixson, a barbecue for some 4,000 guests, a horse show, street dances, a reunion of Boys Ranch alumni and former Sheriffs, and a ribbon cutting which officially opened a new residence cottage named in honor of Ed Blackburn, Jr., former Hillsborough County Sheriff and the first Executive Director of the Boys Ranch.

“. . . the final construction project in a master plan. . .”

Blackburn cottage is the 9th residential unit completed on the Boys Ranch campus, and the final con-

struction project in a master plan developed many years ago. Additional residence cottages were also under construction at the Girls Villa and Youth Ranch in 1982, increasing our total enrollment capacity from 144 to 200. Thus we have greatly enhanced our ability to help good kids suffering from bad breaks.

We enrolled over 1,000 youngsters at our residential centers during our first 25 years in the child care business. Our present rate of progress leads us to believe that we can double or triple that figure during the next 25 years.

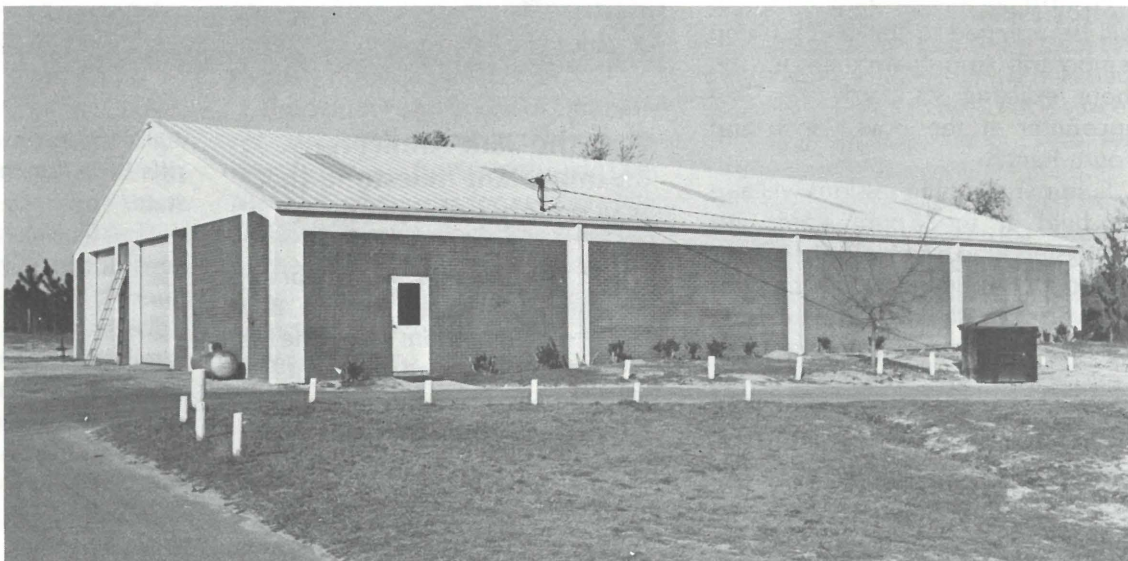
This increase can be anticipated not only because of our expanding facilities, but also because we have a team of social workers (we call them Family Social Workers) whose efforts have enabled us to extend our outreach dramatically.

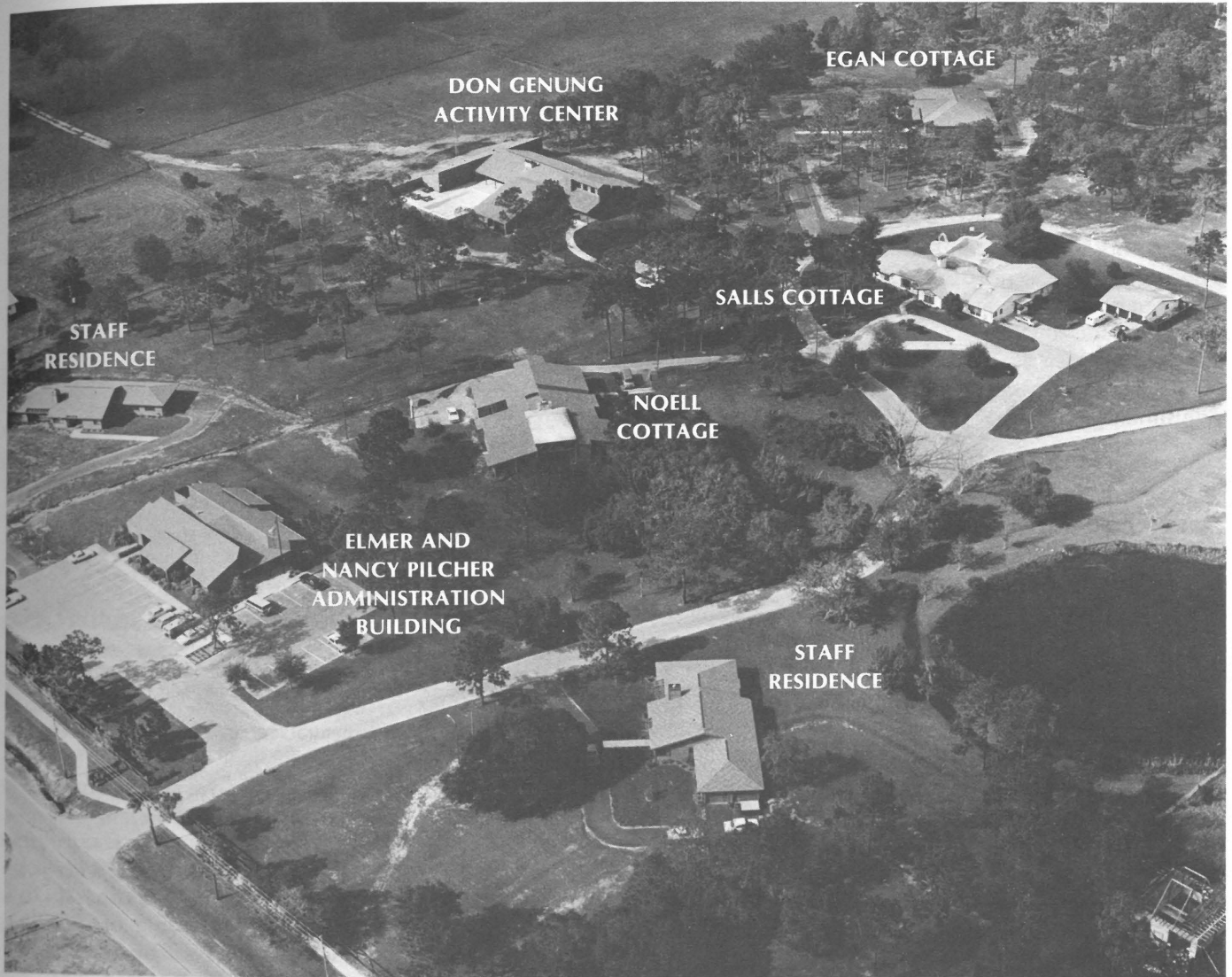
“In the early days. . . it was not unusual for a boy to spend six or seven years on campus.”

Our social workers can take most of the credit for the fact that youngsters no longer stay at the Boys Ranch, Girls Villa and Youth Ranch for long periods of time. In the early days of the Boys Ranch it was not unusual for



The Boys Ranch warehouse constructed in 1958 (see above) has been renovated as a maintenance center and named in memory of the late Don McLeod, one of the Boys Ranch founders.





Aerial view of the Florida Sheriffs Youth Ranch, near Clearwater.

a boy to spend six or seven years on campus. Today the average length of stay is one year and four months.

The old system of long-term residential care was not a bad system. It got good results, but it limited the number of youngsters we could serve and it was not cost-effective.

Our original mode of operation tended to isolate needy youngsters from their unsatisfactory home environments. We simply took them in and "raised" them until they were able to make it on their own.

Today, when we enroll a youngster at the Boys Ranch, Girls Villa or Youth Ranch, our social workers go to work promptly in an effort to improve the home environment. They utilize their

professional skills as well as the resources of various community agencies. They also do everything possible to mend broken relationships between youngsters and parents; and to convince parents that they must accept greater responsibilities.

Our goal for the youngsters we have in residential care is to get them back into a normal family setting as soon as possible. We are in the business of helping children with problems, and we are thoroughly persuaded that we cannot do a good job if we help the child and ignore the family. Therefore, we offer our services to both.

“ . . . at last count they were carrying a caseload of 456 youngsters and 413 families.”

To increase the effectiveness of this concept, we added three social workers to our team of seven in 1982. They operate state-wide and at last count they were carrying a caseload of 456 youngsters and 413 families. Only 155 of these youngsters were living at the Boys Ranch, Girls Villa or Youth Ranch. The others were receiving professional help at home.

Social workers "enter the picture" as soon as a request for service is filed. It is their job to determine whether a child needs residential care at one of our facilities, professional help at

1982 in Review:

home, placement in a foster home, or placement in some other agency outside the Youth Fund orbit.

The wilderness-type camping program we are now starting will give our social workers another alternative. The youngster who needs residential care, but is not quite ready for it emotionally or socially, can be enrolled at the new Youth Camp and given an opportunity to make the necessary adjustments.

“We have . . . changed. . . to meet the needs of a troubled and constantly changing society.”

So . . . here we are, poised on the threshold of our second quarter-century, with child care resources the founders of the Boys Ranch could not possibly have visualized in 1957.

We have grown and progressed and changed in myriad ways to meet the needs of a troubled and constantly changing society. The evolution of the Boys Ranch lifestyle is a case in point.

During the early years of the Boys Ranch the Ranchers lived family-style in cottages with married couples as group parents, but they ate in a central dining room and sent their dirty clothes to a central laundry.

Later, when we founded the Girls Villa and Youth Ranch, we decided to put more emphasis on family-style living, so we made each cottage responsible for preparing a food budget, purchasing groceries, cooking meals and doing laundry.

That system of “self-containment” worked so well that we began converting the Boys Ranch to it. For a while we continued to prepare meals in the Cafetorium, which is the central dining facility, but we distributed them to the cottages in insulated containers so the boys and group parents could eat family-style.

“Ranchers. . . do their own budgeting, cooking and laundry chores.”

In 1982, after improving the kitchen and laundry facilities in some of the older residence cottages, we took the final steps to implement “self-containment.” As a result, the Ranchers in each cottage are now required to do their own budgeting, cooking and laundry. We sharply curtailed the Cafetorium operation. There will still be communal meals for boys and staff members in the Cafetorium on Sundays and major holidays, but, during the remainder of the time, Ranchers will be taking turns purchasing food, planning menus, cooking meals and “doing the dishes” in their cottages.

“We are doing this,” said Youth Fund President Harry K. Weaver, “because boys and girls need these kinds of practical living experiences as they are growing up. We want our cottage families to be as much like real families as possible, and real families usually don’t eat in a Cafetorium with all their neighbors, nor do they send the family laundry out to be done.”

Weaver said self-containment has been very successful at the Girls Villa and Youth Ranch, and he is persuaded it will improve the lifestyle at the Boys Ranch.

Improvements in facilities and programs accelerated the Youth Fund’s pace of progress at an unprecedented rate during 1982, and considerable momentum will be carried over into 1983.

“. . . it is our hope that someone will offer a gift of property. . .”

The Youth Fund wants to continue expanding its network of residential child care centers, and is currently searching southeast Florida for a suitable site on which to establish



Three veteran employees with combined service of 51 years retired in 1982 after a new “self containment” system resulted in the closing of the central laundry at the Boys Ranch. They are (from left) Cora James (13 years), Clara Jones (20 years) and Ruby Edwards (18 years).

another Youth Ranch. It is our hope that someone will offer a gift of property in the near future. If this happens, the founding of our fifth residential facility will become one of our major achievements in 1983.

Aside from that possibility, we anticipate other progressive steps during 1983, such as renovating the new Youth Camp, and making improvements at the Boys Ranch, Girls Villa and Youth Ranch.

Meanwhile, requests for service are increasing. The list of boys and girls waiting for vacancies at our residential centers is steadily growing. It will be a busy year and our financial burdens are bound to get heavier.

“. . . budget is going to go up at a time when the economy is down. . .”

The new residence cottages we built in 1982 are going to be filled to capacity in just a short time. Then there will be the problem of feeding,

Construction work was still in progress at the Boys Ranch and Girls Villa at the end of 1982.

clothing, educating, counseling, and otherwise caring for a large family of boys and girls.

Our operating budget is going to go up at a time when the economy is down, but we anticipated this and we have faith it will work out. The entire history of the Youth Fund can be paraphrased as an exercise in faith. Fortunately our faith seems to grow at the same rate as our financial responsibilities.

President Weaver commented on this phenomenon recently, then added: "We have always had faith in our ability to help troubled boys and girls and families. We have had faith in our supporters who have shown over the years that they care about needy youngsters; and, most of all, we have had faith in God, who has walked with us, smiled upon us, and blessed us.

"In 1982 we stretched our resources and dipped into our financial reserves in order to serve more children. Now we must ask our friends and supporters to stretch their sharing and caring so we can continue to give our boys and girls the best possible quality of care.

"We have faith that our supporters will respond to our needs in the future as they have in the past."

Weaver described the Youth Fund and its child care projects as a venture that offers everybody an opportunity to get involved in caring and sharing. "Some people finance buildings," he said, "while others help us buy basic essentials such as food and clothing.

"The Youth Fund is sustained by people with all kinds of abilities, needs and desires," he added. "It takes everybody to get the job done."





Dedication Was:

Former Sheriff Don Genung chats with Youth Ranch youngsters in front of the activity center named in his honor. The new facility contains MacMinn Youth Chapel, a learning center, a library, a medical clinic, a swimming pool, an arts and crafts area, a woodworking shop, an amateur radio room, and a large activity room for group meetings and recreation.

Don Genung's Day All the Way!

CLEARWATER — Rain, mud and threatening skies failed to put a damper on dedication rites for the Don Genung Activity Center, an education and recreation center recently completed at the Florida Sheriffs Youth Ranch.

The December 12 christening was originally scheduled for outdoors, but was moved inside at the last minute. Hundreds of guests crowded into a large activity room, and overflowed into the adjoining lobby, hallways and offices. Latecomers found seats on a covered patio overlooking the swimming pool where they could hear, but not see, the proceedings.

No one seemed to mind the makeshift change of plans

and when the festivities got underway, it was Don Genung's day all the way!

The former Pinellas County Sheriff was "praised to the skies" in spite of lowering clouds that held visibility to just a few thousand feet; and, in retrospect, some observers felt the bad weather was providential. They were convinced that, had the ceremonies been held outdoors under clear skies, the adulation would have gotten completely out of hand.

Former Hillsborough County Sheriff Ed Blackburn, Jr., whose knowledge of Genung's virtues stretches back at least to 1957, delivered the dedication address and



"There wouldn't be any Florida Sheriffs Boys Ranch. There wouldn't be a Girls Villa at Bartow, nor would we be at this site today, if it were not for Don Genung," said former Hillsborough County Sheriff Ed Blackburn, Jr., who delivered the dedication address.

"What a day! This is great!" said Don Genung, "I just can't begin to tell you how proud I am to have this beautiful building named in my honor."



seriously depleted his stockpile of laudatory adjectives.

He said Genung's whole career had been one of "love and concern" — which is true, of course. And then, in closing, he described Genung as "an embodiment of the words of the prophet Malachi, who said: 'What does the Lord require of thee but to do justice, love mercy, and walk humbly before thy God.'"

Blackburn also quoted the late Sheriff Sid Saunders, who was Genung's predecessor and onetime boss. He said Saunders praised Genung's "unusual knack in public relations," and his "dedicated sense of integrity," when Genung was the Chief Deputy in the Pinellas County Sheriff's Department.

The quotes dated back to 1958 when Blackburn and Saunders were helping to establish the Florida Sheriffs Boys Ranch. "Little did Sheriff Saunders know how pro-

phetic he was when he pointed out what an asset Don would be to this barely beginning project," Blackburn said.

Saunders died in 1958, and Genung was appointed as his successor.

"There wouldn't be any Florida Sheriffs Boys Ranch. There wouldn't be a Girls Villa at Bartow, nor would we be at this site today if it were not for Don Genung," Blackburn added.

Florida Sheriffs Youth Fund President Harry K. Weaver was not to be outdone by Blackburn. In praise of Genung he said: "I know of no one any more committed, more dedicated, and who has more feeling for people, for children and mankind."

When it was Genung's turn to speak he said, "What a day! This is great!" and then paused. For a few heartbeats it

(continued on next page)

Don Genung's Day continued

looked as though this veteran of ten thousand speeches was going to be overcome with emotion, but he recovered and continued.

"I just can't begin to tell you how proud I am to have this beautiful building named in my honor," he said. It's overwhelming when you think of the influence this building and its staff will have on the youngsters living here now, and the youngsters who will come here in the future. It is truly a miracle."

Genung was quick to share the spotlight with his wife, Florence, describing her as "my best friend who went with me and helped me every step of the way."

He also paid glowing tribute to Nancy Pilcher, who gave the first contribution to an activity center fund raising drive, and who had previously joined with her brother, the late Elmer Pilcher, in financing the Youth Ranch Administration Building.

"About six weeks ago Nancy was desperately sick in a hospital," said Genung. "When I went to see her the doctors didn't have any hope. I said, 'Nancy you promised to be at the dedication and you promised to be there for your birthday.'

"And she kinda opened one eye and looked at me and said 'Well, Don, if I promised, I'm just gonna

have to get better.' And, by George, she fooled the doctors and she's here!"

Miss Pilcher was then asked to stand and accept an orchid corsage in honor of her 91st birthday, which was to be celebrated the following day.

Weaver described the Activity Center as the culmination of "a progression of miraculous happenings," and he singled out the financial support received from The International Order of the Rainbow for Girls as one of those "happenings."

Then he dedicated the new facilities "to the Glory of God, who made it all possible."

A few hours prior to the Activity Center dedication program an inaugural religious service had been held in MacMinn Youth Chapel, which occupies one wing of the Activity Center. It was named in honor of Harry F. and Leta MacMinn. Their grandson, the Rev. Dan R. MacMinn, Pastor of the Preston, Georgia, Methodist Church, preached the first sermon delivered from its pulpit.



To the groups and individuals who contributed to the activity center, Florida Sheriffs Association Vice President Jim Hardcastle expressed the appreciation of his fellow Sheriffs, and Robert Martinez expressed the appreciation of the Youth Ranch boys and girls.





Ribbons were cut asunder by Don Genung and Nancy Pilcher (above) to open the activity center; by Mrs. Leta R. MacMinn (above right) to open Egan Cottage. Flanking Genung and Miss Pilcher from left are Polk County Sheriff Louie T. Mims, Chairman of the Florida Sheriffs Youth Fund Board of Directors; Mrs. Florence Genung; and Youth Ranch Resident Director Mac Stones. In the photo with Mrs. MacMinn are Mims; Jennifer Stacy, representing the Rainbow Girls; Mrs. Frances Griffie, the Rainbow Girls' Supreme Deputy in Florida; and Stones. In the photo with Wells are Youth Fund President Harry K. Weaver, Ed Blackburn, Stones, Mims and Florida Sheriffs Association General Counsel John A. Madigan, Jr.



During the Activity Center dedication Weaver thanked the Rainbow Girls. "You came at a very special time," he said. "Thank you for making your portion of this pleasant day possible."

Mrs. Leta MacMinn, Supreme Religion and a member of the House of Gold in the Rainbow Girls hierarchy, responded. "My cup runneth over today," she said. "I feel most humble, most grateful and honored that we have the MacMinn Youth Chapel in this complex.

"For seven years we dilly dallied here and there. . . We wondered where we were going to build it. . . how we were going to be able to build it. The Rainbow girls, through their efforts. . . their contributions, made it possible."

She pointed out that the chapel had been built by young people. "It will give many, many young people the opportunity to meditate, to worship, and to realize how close they are to their Lord and Savior," she added.

Weaver introduced Harold E. Wells, a Certified Public Accountant who had recommended the Florida Sheriffs Youth Fund to his clients, Joseph and Jeanette Egan, when they were looking for a charity to which they could make a substantial bequest.

This happened ten or twelve years ago, Weaver said, and the large bequest was recently used to finance a new residence cottage built and dedicated concurrently with the Activity Center.

As a prelude to a ceremonial ribbon-cutting at the new
(continued on next page)



The most enthusiastic applause of the day was for Miss Nancy Pilcher, who, on the eve of her 91st birthday, was praised for the major role she played in the success of the activity center project. Don Genung paid special tribute to her as one of two special friends. The other special friend is behind Miss Pilcher. Genung identified her as "My wife Florence, who went with me and helped me every step of the way for almost 45 years."



The first religious service in MacMinn Youth Chapel included a sermon by the Rev. Dan R. MacMinn, grandson of Harry F. and Leta MacMinn, the couple in whose honor the chapel was dedicated. The Rev. Mr. MacMinn is Pastor of the Preston, Georgia, Methodist Church.

While they were admiring Egan cottage, Mrs. Catherine Salls and Youth Fund President Harry K. Weaver were remembering how the Youth Ranch began in 1975. Mrs. Salls and her husband, the late D.A. Salls, offered to donate their home and surrounding acres as the Youth Ranch site. The offer was accepted and the rest is history.

The Countryside High School ROTC color guard presented the colors for a pledge of allegiance.



Don Genung's Day continued . . .

Egan Cottage, Wells gave some details about the Egan bequest. He said the Egans were hard working individuals who were very conservative and very thrifty; who always loved children, although they remained childless.

"One day they came to my office and wanted to know who I could recommend to be the beneficiary of their will," said Wells. "Of course Don Genung had quizzed me pretty well on that, so I then suggested the Florida Sheriffs Youth Fund.

"But, after I got through suggesting that, I said, 'Well, maybe what we should do is create an endowment fund. Then we can protect the principal and make sure that's saved, and they can spend the income.'

"Mr. Egan said, 'Harold, that's the dumbest idea I ever heard. If they're smart enough to spend my income, why aren't they smart enough to take care of my principal?'

"He said, 'No, I want to give all our money to the Florida Sheriffs Youth Fund and they can do with it what they please. Just make sure they take good care of it.'

"And so," said Wells, "I'm sure they're real proud today to know that it's been wisely spent in furthering the welfare of the children."

Polk County Sheriff Louie T. Mims, who is Chairman of the Florida Sheriffs Youth Fund Board of Directors, was the Master of Ceremonies during the dedication program.

Pinellas County Sheriff Gerry Coleman, a member of the Youth Fund Board of Directors, welcomed the participants and guests.

Youth Ranch Resident Director Mac Stones introduced special guests; and John A. Madigan, Jr., General Counsel of the Florida Sheriffs Association, introduced Blackburn.

Prayers were offered by Abbey Villanueva, a Youth Ranch resident, and the Rev. Curt Hess, Pastor of Central Christian Church, St. Petersburg.

Robert Martinez, 16, expressed the appreciation of the Youth Ranch residents; and Sarasota County Sheriff Jim Hardcastle, Vice President of the Florida Sheriffs Association, expressed appreciation on behalf of his fellow Sheriffs.

David Meszaros, from the Florida Sheriffs Boys Ranch, played a trumpet accompaniment during the singing of the National Anthem; and the Countryside High School ROTC honor guard presented colors for the Pledge of Allegiance.

The Pride of Pinellas Sweet Adelines sang appropriate holiday season songs during the dedication program and later held a tree trimming party for the Youth Ranch youngsters.

After the dedication, guests were served refreshments and were allowed to tour the Youth Ranch facilities.

"Have you ever had a greater day in your whole life?" a friend asked Genung.

"Never," he said, smiling and shaking his head as though to cast off a feeling of incredulity.

Many Educational Options

Residents of the Girls Villa are offered a variety of educational opportunities. Some are enrolled in a vocational-technical school, some in public schools, and some in the learning center on campus.

A self-development course focusing on poise and social graces, and a Life Education course dealing with decision making are also taught on campus.

Improvements in the Pasture

The barn and pasture area are looking great at the Girls Villa, due in a large measure to the efforts of a group of volunteers headed by Boys Ranch Graduate Wally Edwards.

The volunteers built fences to divide the pasture into three areas, and now we can handle our horses with greater ease.

She Wants to Help Other Girls

A girl who attended the Florida Sheriffs Youth Fund camping session in 1982 wrote to the camping program director to thank him for his help and advice.

"You told me I didn't really need the type of friends I had. . . that I have to be my own best friend," she said. "Also that I must like myself first, or how do I expect the people I want to like me too?"

"Now that I have really found myself," she added, "I want to help other girls (or boys) find solutions to their problems."

Marshall Heads "Friend Raisers"

BARTOW — Sam Marshall, Jr., Manager of Community and Business Relations for International Minerals & Chemical Corporation, is the current chairman of the Girls Villa Board of Associates, a group of "friend raisers" who strive to develop good community relations for the Villa.

S.L. Frisbie IV, a newspaper publisher, is the Vice-chairman, and Mrs. Donald H. Wilson is the Secretary.

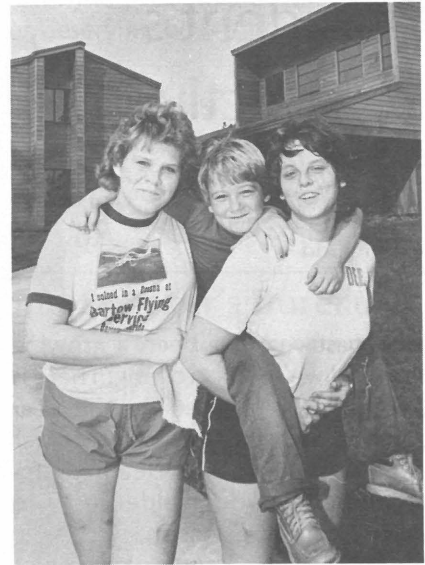
Abbey is an Achiever

Abbey Villanueva, a Youth Ranch resident, may very well be the most versatile achiever among the girls enrolled at our residential care facilities.

She is on the swimming team at Clearwater's Countryside High School and she was also a starting halfback on her school's junior powderpuff football team during the 1982 season.

Piloting an airplane is one of her accomplishments. She soloed cross-country from Bartow to Sarasota, and will be eligible for a pilot's license after she logs two more cross-country flights and passes a written examination.

She has ambitions to be a marine biologist or a commercial pilot.



Abbey (left) with her Youth Ranch friends, Jason Totten and Charity Bell.

No Cows Flunked the Tests

The good news from our farming operations at the Boys Ranch is that all of our cows passed inspection when they were tested for tuberculosis and brucellosis. . . also that we are preparing to plant 100 acres of pine seedlings as part of our ongoing forestry program.

Thoughts about the Past

*By Marcy DelGuidice
A Resident of the Girls Villa*

When I think about the past,
I try to leave the questions for last.
Even though I'm growing older,
It does not mean I'm getting bolder.
The Past is usually not a pretty sight,
Now I will be thinking what tomorrow will be like.

She Became a New Person

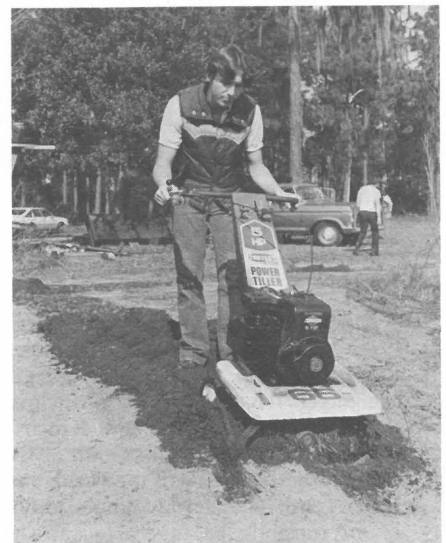
Kim, a graduate of the Girls Villa, has continued to maintain a positive attitude, and to get good grades in high school. Asked to explain her success, this is what she said:

"When I came to the Villa, I saw it as a chance to be a new person because I didn't like the person I was becoming, so I worked on becoming the person I wanted to be."

Classic Has Raised \$152,000

BARTOW — The Girls Villa Classic, a sports event that was started here 11 years ago, has raised \$152,000 for the Florida Sheriffs Girls Villa, including \$12,000 in 1982.

The Classic features golf and tennis tournaments during the Labor Day weekend. In 1982 it drew a record number of entries.



Plowing up an Old Cliche'

In spring a young man's fancy turns to tilling . . . or at least it seemed that way when this picture was taken at the Boys Ranch vegetable garden.

President's Perspective

A message from
Harry K. Weaver, President
of the Florida Sheriffs
Youth Fund



The past year has been a growing year for the Youth Fund, and we're still growing. There is construction, either in progress or planned for the near future, at the Boys Ranch, Girls Villa, and Youth Ranch while, at our new Youth Camp, we are cleaning up and renovating in preparation for our wilderness program and the 1983 summer camping season.

In 1982, at Boys Ranch, we completed a new cottage for 12 boys, transformed an old warehouse into a first-class maintenance facility, and remodeled several of our older cottages to provide the cottage families with the capability of preparing their own meals and doing their own laundry.

The Youth Ranch gained a new cottage for 10 boys and girls and a much needed multipurpose activity center which includes a learning center and a chapel as well as facilities for a variety of leisure-time activities. Two staff residences were also added at the Youth Ranch.

Still under construction are two new cottages (villas) for 12 girls each at the Girls Villa, a Central Office and warehouse-auction facility just off the main campus at the Boys Ranch, and several smaller projects such as maintenance buildings and stables for horses are planned at facilities where they are needed.

The Youth Fund is investing nearly \$3,500,000 in expansion, construction and renovation. For the first time in history, we are invading our reserve funds to do this. We feel that the expansion is needed and the timing is right. Fortunately, many of you have made special gifts to help in our effort to care for more and more boys and girls and for this we are grateful.

The need is unquestionable. There are too many youth in Florida needing the kind of help that the Youth Fund can give, and the current construction program will increase our in-residence capacity to provide that help by approximately 37 percent or 52 additional boys and girls.

Our commitment to build at a time when the construction industry is slow has already saved us several hundred



THE FLORIDA SHERIFFS YOUTH FUND IS . . .

A charitable, non-profit corporation, sponsored by the Florida Sheriffs Association, to manage and operate the Boys Ranch, Girls Villa, Youth Ranch, Camping Program and any other youth programs that might later be developed by the Florida Sheriffs Association. An important function of the Youth Fund is the raising, receiving, budgeting, and disbursing of funds for its programs. The Youth Fund and its programs are supported almost entirely by voluntary gifts. Gifts and bequests can be made to the Youth Fund for the exclusive benefit of any single program, such as the Boys Ranch, Girls Villa, or Youth Ranch, or they may be made without restriction to be distributed among existing programs as most needed or to be used for the development of new programs at the discretion of the Governing Board. Youth Fund Central Offices are co-located with the Boys Ranch.

MAILING ADDRESS — Florida Sheriffs Youth Fund, Boys Ranch, Florida, 32060
Telephone: AC-904 842-5501

BOYS RANCH IS . . .

A residential group child care program for dependent, neglected, or homeless boys between the ages of eight and eighteen. It is not an institution for juvenile delinquents. The Boys Ranch is sponsored by the Florida Sheriffs Association and operated by the Florida Sheriffs Youth Fund. It was founded in 1957 and currently has approximately 108 boys in residence at any given time. The Boys Ranch is located in North Florida, about halfway between Jacksonville and Tallahassee and nine miles north of the town of Live Oak on County Road 795.

GIRLS VILLA . . .

A similar program for girls located two miles east of Bartow, Florida, on Route 60. Originally conceived by the Sunshine State Women's Chamber of Commerce of Madeira Beach, Florida, the Girls Villa was adopted as a project of the Florida Sheriffs Association in 1970. The first buildings were completed and the first girls admitted in 1972. There are approximately 50 girls in residence at any given time. Mailing address and telephone number for the Boys Ranch, Girls Villa, and Youth Ranch are the same as for the Youth Fund.

YOUTH RANCH IS . . .

The most recently developed residential group child care program of the Florida Sheriffs Youth Fund. Also sponsored by the Florida Sheriffs Association, it was opened in 1978. It is located just east of the intersection of the McMullen-Booth Road and County Road 102 near Clearwater, Florida. The Youth Ranch has approximately 30 boys and girls in residence at any given time. It provides care in a homelike environment for brothers and sisters who are dependent, neglected, or homeless. Mailing address and telephone number are the same as for the Youth Fund.

thousand dollars in building costs.

The price of bricks and mortar is only a part of the commitment, however. We must also consider the impact of these new facilities on our operational budget. Additional buildings necessitate additional staff and the expansion of existing programs. They require maintenance and increase utility bills. The cost of caring for the 52 additional boys and girls is no small consideration.

We thought of these things, and our commitment was not made lightly. We know that the Youth Fund is stretching itself, but we have a lot of faith and confidence in people — especially the kinds of people who make up our donor family and who have so generously supported our programs over the years.

There are people who can and do underwrite a portion or the entire cost of a building. Bequests, trusts, gifts of property, investments in Youth Fund gift annuities or our pooled income fund are other ways to share in our vital work with youth.

Some like to provide funds to support one or more youngsters in the summer camping program. Many kind and generous people send cash gifts to our general fund in whatever amount they can afford. These gifts combine with others to cover a very significant part of our operating budget. Gifts in kind (clothing, building materials, pots and pans, or whatever) all are important and are appreciated. Anyone who cares enough to share can find a comfortable way to do so with the Youth Fund.

We truly believe that the kinds of people who support the Youth Fund also support our decision to stretch out and help more boys and girls. We have faith that our friends will want to stretch in their sharing to help us

absorb the costs of growth.

It is this faith and the justification of it, by a lot of warm and caring people over the years, that have touched the lives of hundreds of deserving boys and girls and made them better.

Facts About Our Finances

Copies of the most recent Florida Sheriffs Youth Fund Annual Report are available for the asking. Address your request to Harry Weaver, President, Florida Sheriffs Youth Fund, Boys Ranch, FL 32060.

Youth Fund Speaker's Bureau

Do you need a program for your club, church, or other type organization? We would welcome the opportunity to share the Florida Sheriffs Youth Fund story with your group. Wherever you are, in Florida, you are not too far away for one of our speakers to accept your invitation, and we have a 14½ minute color/sound film all about the Youth Fund. Give us a call at (904) 842-5501 or write to the Florida Sheriffs Youth Fund, Boys Ranch, Florida, 32060.

Telephone Your Gift

To improve our services to you, the Youth Fund now accepts memorial and honor gifts by telephone. We'll send an acknowledgment card to the bereaved party or person being honored the day we receive your call — before your gift arrives — so that the message of your thoughtfulness will not be delayed. Call 904/842-5501.

About Your Estate Planning

Many of our friends have thoughtfully made provision in their estate planning for our boys and girls. If you are considering a gift of this nature or if you would just like to know more about the many and varied opportunities for sharing, we can help. At your invitation, it would be our privilege and pleasure to visit you in your home. If you prefer, you are welcome to visit us or we can furnish information by mail or telephone, whatever is most practical and convenient. Through estate planning which includes the Florida Sheriffs Youth Fund, you can help boys and girls at any or all of our facilities as you choose.

You Can Make a Charitable Gift and Receive an Income . . .

Gift Annuities are paying a fixed rate of income up to 14 percent annually depending upon the age of the annuitant. Our Pooled Income Fund pays a flexible rate depending upon both age and financial market conditions. You can protect yourself and your loved ones financially, while at the same time helping dependent, neglected, or homeless boys and girls.

For information, simply fill out the coupon below and mail it in the postage-paid envelope found elsewhere in this magazine.

Please send literature about:

- () Wills
- () Gift Annuities
- () Pooled Income Fund
- () Trusts
- () Other _____
- () Visit me when you are in my area.

Address inquiries to:

Harry K. Weaver, President
Florida Sheriffs Youth Fund
Boys Ranch, Florida, 32060

Telephone:
A/C - 904 842-5501

Name _____

Address _____

City _____ State _____

Zip _____ Telephone No. _____

The proper form for a bequest is as follows: I bequeath to the Florida Sheriffs Youth Fund, Inc., Boys Ranch, Florida, 32060 . . .



Camp Ticochee was purchased by the Florida Sheriffs Youth Fund in this November 17, 1982 transaction. Seated (from left) are Sheriff Louie Mims, Chairman of the Youth Fund Board of Directors; Margaret Jones, Treasurer, Citrus Council, Girl Scouts of America; and Sheriff L. J. "Lu" Hindery, Secretary-Treasurer of the Youth Fund Board. Standing are: Sheriff Don Moreland; Al Godwin, board member representing the Girl Scout Council; Sheriffs Joe Sheppard and Walt Pellicer; Youth Fund Attorney Gayle Swedmark; and Dr. Sherman Pace, Youth Fund board member. Moreland is a former Chairman of the Board. Pellicer is a Past President of the Florida Sheriffs Association and is currently President of the National Sheriffs' Association.

Youth Fund Buys Permanent Campsite

In 1981 the Florida Sheriffs Youth Fund decided to experiment with camping as a means of reshaping the lives of dependent, neglected and homeless youngsters.

It was a modest beginning. Some tents were pitched at the Boys Ranch. A few Youth Fund and Boys Ranch employees were diverted from their regular duties to head up a temporary staff. Deputy sheriffs, junior deputies and explorers were recruited as counselors.

Forty boys were enrolled in two one-week camping sessions. They swam and played games. They watched deputy sheriffs demonstrate law enforcement skills and techniques. They learned the lore of outdoor living.

Youth Fund officials also learned a thing or two. They discovered that camping not only provided wholesome recreation, but also fostered friendly relations between youngsters and law enforcement officers. They saw troubled kids developing desirable attitudes and casting aside the hostility they had formerly harbored toward people with badges.

The officials were impressed and they voted to make camping a permanent part of the Youth Fund's child care spectrum.

In 1982 the camping program was expanded. Two hundred and fifty-six boys and girls attended eight one-week sessions at Boy Scout and Girl Scout facilities around the state. A small staff headed by an experienced camping

director moved from campsite to campsite to supervise volunteer counselors.

Using an itinerant staff and sharing Scout facilities was not an ideal arrangement, but the 1982 camping program was successful and Youth Fund officials promptly decided to push ahead with plans to establish a permanent campsite which would be operated on a year 'round basis.

Near Summer's end they learned that Camp Ticochee, a 132-acre Girl Scout reservation, was up for sale. It had a full range of facilities, and its location near DeLand made it reasonably accessible to campers from all areas of the state.

The wooded property included a small lake, swimming pool, a large dining hall, staff apartments, a maintenance shop, an administration office, a craft house and three camping areas complete with tents and counselors' cabins.

Here was a ready-made opportunity to expand and improve the camping program without delay, and Youth Fund officials latched on to it.

After thoroughly checking property values and other aspects of the deal, they purchased Camp Ticochee from the Citrus Council, Girl Scouts of America, for \$325,000 on November 17, 1982, and immediately changed the name to Florida Sheriffs Youth Camp.

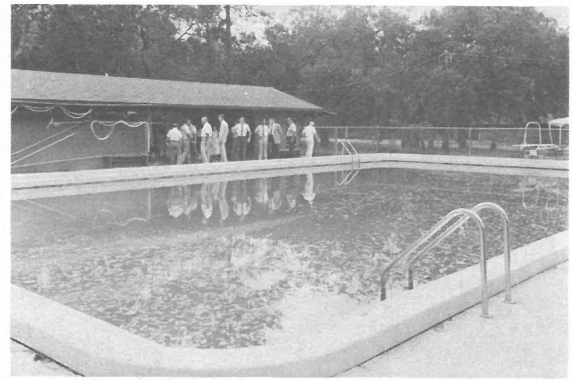
Shortly thereafter preparations were begun to establish a wilderness type camping program which will operate throughout the year. It will serve youngsters who are having difficulty adjusting to the structured environments at the Boys Ranch and Youth Ranch. Some newcomers will also be assigned to it so they can go through a period of adjustment before being transferred to the Boys Ranch or Youth Ranch.

The wilderness type program will remain at the Youth Camp most of the year, but will move to other locations from time to time to give campers varied experiences and educational opportunities.

The summer camping program which was started at the



On September 2, 1982, Youth Fund officials made their first inspection of the Camp Ticochee facilities which included a small lake, a swimming pool, the dining hall and three camping areas.



Involved in the inspection tour were (from left) Jim Strayer, Youth Fund Vice President; Lt. "Buddy" Crevasse, representing Sheriff L. J. "Lu" Hindery; Sheriffs Francis M. O'Loughlin, Jr., and Joe Sheppard, Youth Fund Board members; Sheriffs Don Moreland, Past Chairman of the Youth Fund board; Harry K. Weaver, Youth Fund President; Edward C. "Babe" Grissom, Youth Fund member; and Hudson McMurtrie, Orlando real estate broker who handled the Camp Ticochee transaction.



Boys Ranch in 1981, will be continued and expanded at the new permanent site.

The goal for 1983 is to give a camping experience to some 500 youngsters during the summer months. It is anticipated that the wilderness camp youngster will be engaged in activities and projects away from the Youth Camp when the summer camp is in session.

Ken Edgar, 44, has been hired as the resident director of the Youth Camp and is supervising preparations for the opening session. Bill Biebuyck, who directed the 1982 summer camp, has been transferred to Youth Fund Vice President for Financial Development. A native of Texas, Edgar has had 20 years of child care experience in Texas, Vermont and Florida. A major portion of his career has been devoted to wilderness type programs similar to the one which the Youth Fund is establishing.

He said youngsters can relate quicker to their basic needs when they are outdoors and are being required to prepare their own food and shelter.

"They learn to do what is necessary to get what they want in life," he added.

"You're Like the Daddy I Never Had"

Here are some comments counselors made after the 1982 summer camping session:

"Boys found out that deputies are not gun-toting robots. The kids were exposed to caring human beings who shared day-to-day activities and experiences."

"It was amazing to watch these boys change in just one week, accepting discipline, getting along with others, relating to deputies, living, working and playing together. Most would not have had this experience without the Youth Fund Camp."

"My desire to work with troubled youth has been strengthened. How could it be otherwise when a boy tells you: 'You're like the daddy I never had'?"



Jimmy with Jason and Tanda

“Work” was the Name of the Game;

But Jimmy had other Priorities

How did the youngsters at the Florida Sheriffs Youth Ranch feel about the hard work they had to do to get ready for the dedication celebration held on December 12, 1982?

Our photographer visited the Youth Ranch on December 11, and was surprised to find everyone apparently laboring and loving it. Morale was excellent. There was enthusiasm bordering on phantasm. Charity and Marcella, and John and Sharon, and Dennis and Tammy, and Karl and Todd, and Gina and Penney, and Abbey and a lot of other kids were really going for broke — as though work were some kind of a game.

And then there was Jimmy Lawson, a captivating nine-year-old wearing an E.T. shirt. He seemed to be more interested in having his picture taken than sprucing up the campus for visitors. He actually did use a shovel for a little while, but dropped it when he saw an opportunity to pose with Jason Totten and Tanda Roatch.

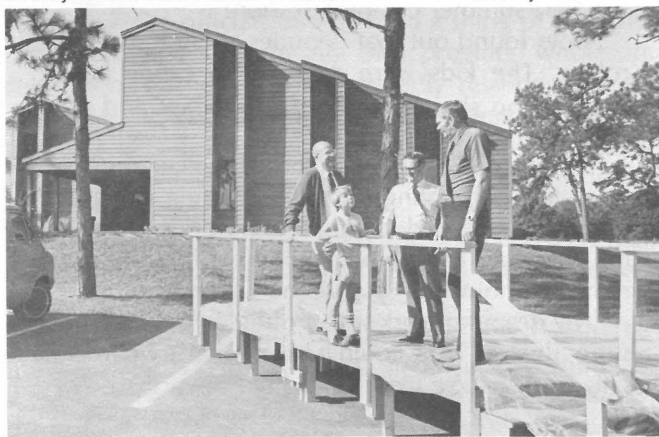
Later he managed to get in front of the lens again when the photographer took a picture of Youth Fund officials conferring. They were deciding to tear down the speaker's platform and move the dedication ceremonies inside because of approaching bad weather.

Jimmy wasn't involved in the discussion, but he had a politician's ability to wander into camera range and look involved. Keep an eye on this kid. He could become Governor, or better yet, a Sheriff!



Jimmy with Youth Ranch officials

Jimmy with shovel





Social Worker Gets Fan Mail

To the social worker who placed him at the Florida Sheriffs Youth Ranch a 16-year-old boy wrote a letter of thanks. "I think this is one of my better steps forward in life," he said, "and I sincerely appreciate the help you have given me along the way."

NEW ADDRESS?

Americans are on the move, and keeping up with changes of address is a six-aspirin headache. Some of our subscribers (bless them) send us their new addresses. Others let the U. S. Postal Service notify us, and the Postal Service charges us 25 cents for each new address. If you have a new address, please help us to keep our budget in balance by clipping out this form, filling it out and mailing it to:

Circulation Dept.
THE RANCHER
 Boys Ranch, FL 32060

Name _____

Address _____

City _____ State _____ Zip _____

In this space, please attach your RANCHER mailing label with the old address and fill in the new address above. Also do the same with name changes and corrections.

MEMORIAL FUND

GIFTS

Contributions to the Florida Sheriffs Youth Fund are listed in alphabetical order by name of the deceased. Donors are listed after the name of the person in whose memory they contributed.

The Memorial Fund donations for this listing were received by the Florida Sheriffs Youth Fund between October 12, 1982, and December 31, 1982.

A

SHERIFF S.C.M. THOMAS
Mr. Ernest J. Lytle, Jr.

HANS SANDBEK ABRAHAMSEN
Mr. & Mrs. Ralph Abrahamson

JOSEPH ACHTERLING
Mr. & Mrs. Frank L. Posel

CARL ADAMS
Mr. & Mrs. Stephen Herring

STANLEY N. ADAMS
Mrs. Frances C. Adams

GLENN R. ADKINSON
Mrs. Glenn R. Adkinson

WALTER AHLBERG
Mrs. Walter E. Ahlberg

MRS. ROSE AHRENS
Walter F.F. Ahrens

C.W. ALLSTOCK
Mrs. Virginia A. Rankin

HAROLD ALBERT
J.H. Dunlap

JAMES ALBRITTON
Mr. & Mrs. Frank C. Brown

MARY CLIFTON ALBRITTON
Howard A. Maddox, Inc.

JAMES ALDERMAN
Mr. & Mrs. Ola Sircy

MRS. LOUISE ALFORD
Mr. & Mrs. Allan H. Klug

EARL M. ALLEN
Mrs. Earl M. Allen

HARDY ALLEN
Mrs. Hardy Allen

HOWELL T. ALLEN
Mr. & Mrs. Norman L. Allen

MRS. OLA F. ALLEN
Mr. & Mrs. Norman L. Allen

OTIS W. ALLEN
Mrs. Otis W. Allen

VICTOR W. ALLEN
Mrs. Dorothy Allen Benton

PETE ALMY
Mrs. L.K. Almy

JOHN ALTEN ALTENHOFF
Mr. & Mrs. Dan Scott, Jr.

FRED ALTPETER
Mrs. Fred F. Altpeter

MRS. FLORENCE AMDAHL
Mr. & Mrs. Charles B. Renneckar
Mr. & Mrs. Erick Bennett

ULRIC AMENA
Mrs. Pebble Amena

FINN ANDERSEN
Mr. & Mrs. Raymond Greenstein

ARTHUR F. ANDERSON
Byron Underwood

EVARD O. ANDERSON
Mrs. Ray T. Harders

MRS. GERTRUDE ANDERSON
Belleair Manor Club

ICIE ANDERSON
Mr. & Mrs. Oliver Scott

MRS. SHIRLEY DAVIS ANDREW
Mrs. Frances Middleton
W. Douglas Hartley
Mr. & Mrs. Ronald Kniebes
Mrs. Mila Dean Mahr
Mr. & Mrs. W.C. Northen
Ms. Catherine Hardee
Mr. & Mrs. Mario V. Hugas
Dr. & Mrs. Carle T. Elkins
Mr. & Mrs. Jerry E. Hamilton
Mr. & Mrs. Abe Lemons
Mr. & Mrs. Getzel Irons
Mr. & Mrs. Ted Tidwell
Lt. & Mrs. Robert D. Bissell

STANLEY ANDREW
Sterling Andrew

DR. & MRS. F. ANDREWS
Lyman M. Lowry

ISAAC JOSEPH ANDRUS
Mr. & Mrs. Chester Greenhalgh

MRS. IDA E. ANTON
Barney Anton

TREVISAN ANTONIO
Mrs. Lory E. Smith

VICTOR H. APPLEBY, SR.
Mr. & Mrs. Charles J. Appleby

MRS. RALPH APPLGATE
Mrs. Sara R. Johnson

MRS. LILLIAN B. APPLETON
Charles Appleton

ALFRED ARMSTRONG
Mrs. Katherine Armstrong

B.N. ARMSTRONG
Mrs. Nell Armstrong

LORRAINE ARUTA
Mrs. Semora V. Remer

ROBERT ASHBAUGH
Miss Elizabeth B. Ransom

REV. FRANK J. ATTERTON
Robert A. Atterton

CARL & PEGGY AUGUSTINE
Mrs. Jessie F. Augustine

MRS. CHARLES AUSLEY
Mr. & Mrs. Sidney T.H. Carlson
L. Grant Peeples
Mr. & Mrs. Ed Blackburn, Jr.
Mr. & Mrs. Jim Ball
Tallahassee Exchange Club
Mr. & Mrs. Bud Williamson
Mr. & Mrs. F.S. Shaw, Sr.

MRS. LORANNE DUBOSE
AUSLEY
Mrs. Alma A. Munroe
Dr. & Mrs. A.J. Henry, Jr.

ALBERT AUSTIN
Mr. & Mrs. Herschel W. Owens

PORTER AUXIER
Mrs. Helen Auxier

MRS. MYRTICE AVERY
Mr. & Mrs. James Brettingen
Mr. & Mrs. Harry K. Weaver

GEORGE AVRITT
Mr. & Mrs. Jimmy O. Biddle

JAMES AVRITT
Mr. & Mrs. Jimmy O. Biddle

WILLIAM AXELSON
Mr. & Mrs. Nicholas Rothenthaler
William J. Hinkle

ROBERT MARTIN AYLOR
Mr. & Mrs. Arnold Keithlin

FRANK ELLISON BAARS
Ms. Dorothy Baars

MRS. MILDRED E. BACON
Howard P. Bacon

STANROS BAGINIS
Mrs. Emma Baginis

MR. & MRS. J.H. BAILEY
Mr. & Mrs. Paul B. Grieser

MOM & POP BAILEY
Mr. & Mrs. Cody L. Bailey

MRS. BESSIE D. BAIRD
Col. & Mrs. Newton D. Lesh

MRS. JOSEPH A. BAIRD
Sumner R. Lowe

PETER & ANNA BAIZA
Miss Bernadine Baiza

EARL R. BAKER
Mr. & Mrs. J. Earl Steinhauer

MRS. ELLA BAILEY
Ms. Martha M. Cameron

JACK BAKER
Mr. & Mrs. Warren Howell
Mr. & Mrs. Ephraim L. Bartlett

COL. PAUL T. BAKER
Mrs. Paul T. Baker

COL. W.E. BAKER
Mrs. W.E. Baker

MISS RUTH BAKER
Mr. & Mrs. Fred A. Rankin, Jr.

JOHN C. BALDWIN, JR.
Mr. & Mrs. H.C. Baldwin
Mr. & Mrs. John C. Baldwin, Sr.

MRS. HELEN A. BALIGIAN
Mr. & Mrs. Joseph Capezza, Sr.

ELEANOR R. BALLARD
Charles P. Ballard

MRS. BRONNA L. BALSTER
Mr. & Mrs. W.N. Purcell

ARTHUR G. BAMOND
Mrs. Leonore G. Bamond

WAYNE F. BANFILL
Mr. & Mrs. Theodore L. Gaboury

JOSEPH E. BARGAS
Mrs. Marie S. Bargas

CORKY BARKLEY
Ms. Ruth R. Barkley

MRS. RUTH N. BARNIKOW
Robert Barnikow

AL BARONE
Mrs. Lee K. Bell

JOHN M. BARRON
Mrs. Sarah V. Barron

MRS. PEARL BASHAM
Dr. & Mrs. John Redmond
Mr. & Mrs. Alton P. Smith

GEORGE W. BASS
Col. & Mrs. Edward G.D. Bright

TOBE BASS
Mrs. Pearl Godwin

B

MRS. C. BASSETT
Mr. & Mrs. Edwin B. Bassett

CHARLES BAUENE
Mrs. Jeanne Bauene

ADAM E. BAUER
Mrs. Minnie Griffin

HANS J. BAUMAN
Mrs. Etta S. Bauman

IRVING N. BAXTER
Mrs. Kathryn Baxter

FLORA MAE BAYLES
John Law Ayers

ARTHUR R. BEARDEN
Mrs. Peggy M. Bearden

BRIAN & WEBB BEASLEY
Mr. & Mrs. William D. Beasley

EDSON W. BEATTY
Randy Raspochnik

FRANK BEAVER
Mrs. Myrtle Beaver

MRS. ELLA MARIE BECK
Stanleigh W. Beck

GEORGE C. BECK
Mrs. Caroline V. Beck

LORENZ BECK, SR.
Mr. & Mrs. Walter H. Judisch

CHARLES & MATTIE BECKER
Lawrence R. & Margaret Vercoe Becker

MILFORD BEHNKE
Mr. & Mrs. Clarence A. Morton

HERBERT G. BEHRENS
Mrs. Lucille Behrens

MRS. RUTH T. BELCHER
Mr. & Mrs. W.N. Purcell

GEORGE S. BELL
Mrs. Doris E. Bell

JOHN F. BELL
Mrs. Alton C. Childs

WILLIAM B. BELOTTE
Mr. & Mrs. William Baker
Mr. & Mrs. Charles J. McGlave
Mr. & Mrs. W.L. Bunce

ALVIN BEMIS
Mr. & Mrs. John Breejen

STEPHEN & STEVIE BENDURE
Mrs. Dorothy W. Bendure

GEORGE E. BENEDICT
Mrs. Beatrice N. Benedict

GENE BENNETT
Mr. & Mrs. Don Jones

JOE P. BENNETT
Mrs. Betty M. Dubois

JOHN E. BENNETT
Mrs. John E. Bennett

MARY BENTLEY
LCDR Fred Bentley

CHET & HELEN BERQUIST
Estate of Chet & Helen Berquist

MRS. HELEN BEST
Mr. & Mrs. Robert M. Best

CLARAGE EARL BETTS
Mr. & Mrs. Jerry Shelby
Bo Zack
Sally & Nancy Zack

FRED BETTZ
Mrs. Nola Banta Bettz

ALBERT BEYER
Mrs. Margaret Beyer

RAY BICKERS
Mrs. Mary E. Bickers

B.F. BIEMANN
Mrs. Pamela M. Berglund

MRS. DELLA K. BILLINGSLEY
Mrs. Ruth Kavanaugh

FRANK W. BINDHAMMER
Mrs. Bertha R. Bindhammer

MRS. ANNA K. BISHOP
Mr. & Mrs. Paul C. Clugh

HELEN L. BISOGNO
John E. Bisogno

CHARLES H. BLATTNER
Mrs. Charles H. Blattner

NORMAN W. BLOOD, SR.
Mrs. Norman W. Blood, Sr.

MRS. MURLER BLOUNT
Jack R. Lowder
Mr. & Mrs. C.H. Hancock

MRS. FLORENCE L. BLUNK
Wood L. Blunk
Mrs. John Nevrkla

ADRIAN K. BOATNER
Sumner R. Lowe
Mr. & Mrs. R. Leslie Green

MRS. ALFHILD HELEN BOCK
Walter P. Bock
Mrs. Joan Carolyn Haskins

PROF. HENRY F. BOETTCHER
Dr. & Mrs. Howard A. Felding

JACK WALTON BOHANNON
Sheriff & Mrs. Lucian J. Hindery

JOHN BOJE
Mrs. C.H. Benson

DALE W. BOLGER
Mr. & Mrs. Robert Whiting

E. STOKES BOLIN
Mrs. Susanna S. Bolin

JAMES BOND, SR.
Mrs. Elsie Bond Dugue

JOHN BORJES
Mr. & Mrs. William J. Borjes

MRS. IDA BORSILLI
Tony Borsilli

FRED BOSSERMAN
Mr. & Mrs. James Brettingen

WILLIAM F. BOSTON
Mrs. William F. Boston

HELEN BOUGHEY
Stoepel Boughey
William V. Krueger, Sr.
Beverly K. Fink

CLYDE BOWEN
Mr. & Mrs. David C. Merritt

OREN A. BOWEN
Mrs. Aurelia A. Bowen

MARY JO BOWHALL
Mr. & Mrs. Orla P. Bowhall

HENRY BOYD
Mrs. Earnest Holeman
Mrs. Miriam W. Haber
M. Robbins
M. Dobeleit

TERRY BOYD
Mr. & Mrs. Robert T. McElyea
South Sumter Middle School

MRS. DORIS M. BOYER
Mr. & Mrs. W.N. Purcell

MRS. YVONNE A. BRACEY
Henry C. Bracey

MARVIN WALLS BRADEN
Mrs. Mabel M. Braden

EDWARD L. BRADLEY
Mrs. Edward L. Bradley, Jr.

FRANK O. BRADFORD
Mrs. Thelma N. Bradford

BERNARDO BRAGANZA
Mrs. Agripina E. Pabros

GEORGE E. BRANT
Mr. & Mrs. Christian H. Jensen

MRS. MARGARET F. BRANT
John Law Ayers

FRANK BRASSFIELD
Mr. & Mrs. Harry L. Thompson

MRS. LORETTA BRAUN
Mr. & Mrs. George W. Morris

ROBERT DUDLEY BREARLEY
Ms. Jane H. Henkle

MRS. JEAN BREJCHA
Richard J. Brejcha

EDWARD BRELLENTHIN
Mr. & Mrs. Robert W. Wright

JAMES E. BRENNAN
Mr. & Mrs. Charles Fallon

ARNIE A. BREWER
Mrs. Vesta M. Brewer

WAYNE BREWER
Adam Wilson

MRS. ORALEE DAVIS BRIENT
Mrs. Margaret B. Steinbrunn

MRS. GRACIE MAE BRITT
Sheriff & Mrs. Joe Sheppard

COL. WILLIAM H. BRITTON
Mr. & Mrs. John M. Cusack

MRS. SYLVIA N. BROCHER
Henry J. Brocher

FLORENCE BROCK
Mr. & Mrs. Horace W. Peterson

JAMES BRODERICK
Mrs. Margaret Broderick

MRS. ANNE M. BROGAN
John J. Brogan

DAVID BRONSON
Mrs. Rose Bronson Eisey

JACK BRONSON
Ms. Mary B. Bronson

THOMAS V. BROOKING
Mr. & Mrs. Cooper O. Vickery
Mr. & Mrs. C.E. Toole
Miss Ellen Savage
Miss Violet Savage

LEON BROOKS
Mr. & Mrs. William Edenfield

GEORGE L. BROPHY
Mrs. George L. Brophy

CARL D. BROREIN, SR.
Ms. Mary C. Brorein

CLAUDE O. BROWN
Mrs. Inger T. Brown

FRED S. BROWN
Mr. & Mrs. Richard T. Boyd

MILTON G. BROWN
Mrs. Ruth P. Brown

THEODOR V. BROWN
Mrs. Mildred Brown

U.L. BROWN
Mrs. Nell Brown

JOHNNY BROWNING
Mr. & Mrs. Earl B. Daves
Dr. & Mrs. John D. Browning

NORMAN L. BRUBACH
Mrs. Norman L. Brubach

WILLIAM R. BRYAN
Mrs. Violet I. Bryan

ELAM J. BRYANT
Ms. Fannie Mae McLean

ALBERT BUCHIET
Mr. & Mrs. John P. Lillywhite

WALTER S. BUCKINGHAM, SR.
Mrs. Walter S. Buckingham, Sr.

WILLIAM & EVELYN BULKELEY
Ms. Evelyn B. Pescosolido

THOMAS BULLETT
Mr. & Mrs. Ralph H. Jordan

GORDON S. BULLOCK
Lawrence S. Carr

GILBERT E. BURCHELL
Mrs. Mary V. Burchell

ALLEN J. BURDOIN
Mrs. Allen J. Burdoin

JAMES C. BURGOYNE
Mrs. Josephine S. Burgoyne

RUSSELL A. BURK
Mrs. Violet C. Burk

BERNICE L. BURKETT
Ms. Helen E. Stephens

SGT. LANSE BURKETT
Mrs. Pearl B. Brown

SYMMES BURNETT
J. Griffin Walker

ROBERT B. BURNS
Mrs. Robert B. Burns

ALICE W. BURRELL
Mrs. Rhesa G. Igou

CECELIA TRABAND
BURROUGHS
Mrs. Naomi Vertanesian

WAYNE L. BUSH
Mrs. Etta R. Bush

EDNA F. BUTT
Ms. Helen Lutz
Ms. Grace Follmer

CHARLES A. BUTTS
Mrs. Charlie Butts
CHARLES F. BYRD
Mrs. Charles F. Byrd
J.R. BYRD
Mrs. Cornelia Byrd

C

JAMES CALDWELL
Mrs. James Caldwell
J. GARRETT CALHOUN
Mrs. Thelma B. Calhoun
EUGENE E. CALL
Mr. & Mrs. Norman Call
PAUL CAMERON
Mr. & Mrs. George A. Martin
RAYMOND J. CAMP, JR.
Mr. & Mrs. J.W. Register
Mr. & Mrs. Myron D. Johnson
Mr. & Mrs. Jimmy O. Biddle
DR. CLAUDE ARTHUR
CAMPBELL
Mr. & Mrs. Robert C. Crooks
T.J. CAMPBELL
Mr. & Mrs. Willis R. Negus
Sheriff & Mrs. Lanie Norvell
Mr. & Mrs. Tinker Thomas
Mr. & Mrs. John W. Keane
MRS. ELIZABETH C. CANADA
John W. Canada
CARLO CANDIA
Mrs. Emma Baginis
ROBERT VICTOR CANTEY
Mrs. Joseph L. Spitz
Mrs. Catherine S. Maxwell
BERNARD CARIER
Mrs. Bernard Carier
HOLLEN H. CARLISLE
Mr. & Mrs. H.M. Coachman
Jack Russell Oil Co., Inc.
Jack Russell, Sr.
Jack Russell, Jr.
BARBARA ANNE CARPENTER
Col. & Mrs. James S.
Carpenter
LLOYD CARR
Mr. & Mrs. Allen D. Carroll
GENE HALL CARRANZA
Mrs. Nellie B. Hall
MRS. FRANCISCA S. CARRION
Ralph Carrion
MRS. IVA E. PICKLE CARTER
Steven L. Carter
ROY CARUTHERS
Mr. & Mrs. Robert T. McElyea
JOHN F. CASSELLBERTY
Mrs. Naomi L. Casselberry
HORACE J. CASSON
Mr. & Mrs. Carl G. Bruce
MICHAEL CASTLEFORTE
Mr. & Mrs. Walter M. Barclay
MRS. MARY CASTO
Mr. & Mrs. Frederick J.
Schweizer
FREDERIC C. CASWELL
Mrs. Frederic C. Caswell
VINCENT CATURANO
Mrs. Mary Caturano
RAYMOND N. CAVERLY
Mrs. Rene N. Caverly
MRS. WILLIAM G. CHACE
Mr. & Mrs. Harrison W. Boylan
MARGARET E. CHAMBERS
Harry C. Chambers
A.B. CHAMPAGNE
Mrs. Mavis F. Champagne
ARTHUR J. CHAMPION
Mr. & Mrs. Donald J. Davis
HENRY S. CHANDLER
Mrs. Mary Bernita Chandler
MRS. DELIA CHATEL
Mrs. Doris Beaulieu
MRS. DOROTHY CHEEK
W.J. Cheek
RALPH R. CHESNUT
Mr. & Mrs. Allen D. Carroll
ROBERT A. CHEZEM
Mrs. Garnett M. Chezem
LENA CHIAIESE
Mrs. Emma Baginis
VINCENT CHIAIESE
Mrs. Emma Baginis

ALEXANDER G. CHILDS
Mrs. A.G. Childs
WILLIS R. CHRISTIAN
Mrs. Willis R. Christian
WILLIAM R. CHRISTIE
Mrs. Gladys Christie
MRS. FLORENCE CIOFFOLETTI
Rocco Cioffoletti
ANDREW CIUFFO
Mr. & Mrs. Salvatore Ciuffo
MRS. ALMA CLARK
Mrs. Ruth W. Roberts
C.K. CLARK
Sheriff & Mrs. Joe Sheppard
MRS. DOROTHY CLARK
Mrs. E.E. Melton
Mr. & Mrs. Bushrod M.
Clement
MAXWELL A. CLARK
Mrs. Maxwell A. Clark
HARRY W. CLARK, JR.
Mr. & Mrs. Joseph A. Powers
OTTO A. CLARKE
Mrs. Edna Clarke
ALTON M. CLAY
Mrs. Alton M. Clay
MRS. FRANCES N. CLAYTON
Mrs. Marguerite McLeod
MRS. ELIZABETH CLINTON
Mrs. Constance Fellows
LELAND COBB
Mr. & Mrs. Wallace F. Pepper
MR. & MRS. WILLIAM
COCHRANE
Mrs. Mrs. Robert H. Cochrane
F.A. COCKRELL
Mr. & Mrs. Roswell Myers
EDWARD L. COFFEY
Mr. & Mrs. Arthur L. Mabon
MRS. GLADYS COGGER
W.R. Cogger, Sr.
BETTY COKER
Estate of Broward Coker
BROWARD COKER
Mr. & Mrs. Ed Blackburn, Jr.
Mrs. Anne M. Williams
Mr. & Mrs. M.F. Dandridge
Ms. Jo Ann Coker Goff
Woodrow W. Harshman
Howard A. Maddox, Inc.
Earl L. Metheny
Mr. & Mrs. F.M. Schumacher
Mrs. Ina A. Forbes
Mr. & Mrs. John H. Graham
John, Jr., and David
Mr. & Mrs. Donald Tindell
Mr. & Mrs. J.C. Murdock
Lorida Baptist Church
Ms. Bonnie Albritton
Mr. & Mrs. Gilford Tomlinson
Mr. & Mrs. James P. McClaren
Mrs. Helen P. Schwin
Mrs. Ben H. McGee
Estate of Broward Coker
Mr. & Mrs. P.G. Gearing
Calvary Church
Sheriff & Mrs. Joe Sheppard
Mr. & Mrs. Don Deadwyler
THOMAS A. COLE
William B. Epley
FORREST COLEGROVE
Mrs. O.A. Spotts
Mr. & Mrs. Merle M. Bright
Mr. & Mrs. Robert W. Green
Mr. & Mrs. Carl A. Mattson, Jr.
Mrs. Anne W. Rose
Mrs. Forrest D. Colegrove
Florida Power Corp.
J.M. COLEMAN
Mrs. Joyce T. Coleman
REED H.F. COLES
Mr. & Mrs. Alfred H. Coles, Sr.
BARRY COLLINS
Mrs. Helene M. Shiner
GEORGE E. COLLINS
Tom W. Brown
Mr. & Mrs. Eldridge R. Collins
Mrs. Earl M. Herlong
Mr. & Mrs. Julian E. Collins
Mr. & Mrs. C.B. Terry
MRS. HERMAN COLLINS
Mr. & Mrs. Robert Pridgeon
MRS. MARTHA COLLINS
Mr. & Mrs. Charles O.
Rountree
ABE COLON
Mr. & Mrs. Leon D. Colon

MRS. FRANCES G. COMERSACK
Stanton A. Comersack
MRS. ALMA COMSTOCK
Walter Comstock
CARLTON C. CONE
Mr. & Mrs. Victor B. Yeats
MRS. MARION S. CONNOR
C.M. Connor
DANIEL & HELEN CONSODINE
Mrs. Frances E. Strong
HARRY J. COOK
Mrs. Harry J. Cook
HARVEY COOK
Mrs. Lois B. Campbell
L.L. COOK
Ms. Belle Morton Cook
MRS. LUCILLE W. COOK
Chester Cook
ROBERT COOK
Mrs. Margaret Malley
WILLIAM C. COOK
Abram E. Greene
COOK FAMILY
Mrs. Clara H. Hughes
RAMON D. COOKSEY
Walter V. Culley, Sr.
RALPH A. COOPER
Mrs. Glennie D. Cooper
MRS. MARY LOUISE CORBETT
Mrs. Mila Dean Mahr
NORMAN C. COREY
Mr. & Mrs. W.F. Cobler
STANLEY T. CORNOCK
Mrs. Lorna Cornock
MRS. DOROTHY F. CORRADO
Mr. & Mrs. Kenneth W. Zisler
JOHN COSGROVE
Mrs. Florence Hughes
PAT COSGROVE
Mrs. R.O. Downie
JAMES F. COSTINE
Mrs. Ruby R. Costine
LEO J. COTE
Mrs. Leo J. Cote
IRENE C. COTTON
Robert S. Cotton
JOSEPH COUSINEAU
Mrs. Doris F. Cousineau
HARVEY J. COWAN
Mrs. Eve Cowan
LEROY COWART
Mrs. I.R. Meloy
MRS. MARGARET A. COX
Everett W. Cox
WILLIAM B. COX
Mr. & Mrs. George C. Gross
L.C. CRANDALL
Mrs. L.C. Crandall
ARTHUR D. CRANE
Mrs. Hilda Crowe
JUANITA MARIE CRAWFORD
Howard A. Maddox, Inc.
MRS. MARGIE CRAWFORD
Mr. & Mrs. W.T. Hiers, Sr.
Mr. & Mrs. Roy E. Harrison
Mr. & Mrs. W.T. Hiers, Jr.
Mr. & Mrs. Elwyn Childs
ROBERT LON CREEKMORE
Mrs. Bessie B. Creekmore
MABEL ANGELINE CRESPI
Dr. P. Leo Crespi
CECIL E. CROFT
Mr. & Mrs. Lonnie Dopson
GEORGE MAYES CROWDER
Dr. & Mrs. Ben M. Crowder
GORDON M. CROWLEY
Mrs. Gordon M. Crowley
FREDERICK D. CRUM
Mr. & Mrs. Charles D. Clift, Jr.
WILLIAM H. CRUM
Mrs. Otis L. Crum
Richard B. Crum
Mrs. Pearl Godwin
MRS. JUNE TAYLOR CURCI
John P. Curci, Sr.
CATHERINE E. CURRY
James F. Curry
ELLSWORTH F. CURTIN
Mrs. Margaretta C. Curtin
JEROME J. CURTIS
Mrs. Kate Y. Curtis

D

JACK DAILEY
Mr. & Mrs. Frank J. Dailey
ARTHUR DAILEY
Mrs. Mona Daley
WILLIAM & DOROTHY DALEY
Mrs. Margaret R. Loehr
JOSEPH W. DALTON
Mr. & Mrs. Victor B. Yeats
MRS. MATTIE S. DANIEL
Mrs. Gladys Gregory
NIX DANIEL, SR.
Mrs. Nix Daniel, Sr.
MRS. JANIE W. DANNELLEY
Mr. & Mrs. E.A. Williams, Sr.
MRS. MIRIAM DARTY
Mr. & Mrs. W.G. Darty
DR. J. DWIGHT DAUGHERTY
Mrs. J. Dwight Daugherty
THOMAS P. DAUGHERTY
Mrs. Thomas P. Daugherty
ALLIE DAUGHTREY
Cecil Daughtrey, Sr.
JAMES H. DAUGHTREY
Cecil Daughtrey, Sr.
JAMES H. DAUGHTREY, JR.
Cecil Daughtrey, Sr.
MARION DAVIES
Mrs. Mary Grace Curley
CLARENCE R. DAVIS
Mrs. Clarence R. Davis
MRS. ELLEN DAVIS
Mrs. Helen M. Nelson
JAMES B. DAVIS
Mr. & Mrs. Mitchell Chesser
MRS. MICHAEL DAVIS
Michael Davis
MRS. VIRENA F. DAVIS
Mr. & Mrs. Henry H. Clark, Sr.
MRS. ELIZABETH DAVISON
C.E. Davison
MRS. MISAKO DAVISON
Mr. & Mrs. D. Joseph Bazan
ROBERT D. DAWSON
Mrs. Sarah L. Dawson
MICHAEL DE CANDIA
Rocco De Candia
GASTON DE GROOTE
Mrs. E.E. De Groote
LESTER LEROY DE VILLING
Mr. & Mrs. Walter Myrick
BRUCE W. DEANE
Mrs. Julia M. Deane
EVA DEGY
Tuesday Happy Helpers
CLARENCE DEJONG, JR.
Mrs. Ruth Dejong
HELEN HEMERLING DELANEY
Col. & Mrs. Carlton J. Martin
JOHN DELAREDE
Mrs. Eleanor F. Delarede
MR. & MRS. JULIUS
DELLA-CROCE
Julius Della-Croce
L.F. DEMING, JR.
Mrs. Anna B. Longfellow
JAMES C. DEMPSEY
Mrs. James C. Dempsey
JAMES N. DEMPSEY
C.B. Nuckolls
Mr. & Mrs. Ed Blackburn, Jr.
Mr. & Mrs. Paul A. Bailey
Mr. & Mrs. James F. Hall
Mr. & Mrs. Harry S. Carlton
Ms. Mary Gardner
Mr. & Mrs. Joe C. White
Mr. & Mrs. Kenneth F. Cassels
Mrs. A.L. Sparkman
Mrs. Mae Wiggins
Ms. Mary Nelle Kovach
MRS. OLIVE J. DEMPSEY
Mr. & Mrs. William R. Baker
MRS. MINNIE DENING
Mr. & Mrs. Everest W. Gilman
DEPARTED MEMBERS
Calvary Episcopal
Churchwomen
MRS. MABEL DERRY
Mr. & Mrs. Raynard E. Nelson
WILLIAM FRANCIS
DESROCHERS
Mrs. Ida M. Desrochers

E

EDWIN WHITE DESHAZO
Mr. & Mrs. R.B. Underwood
JACK B. DEVORE, SR.
Mrs. Adelia De Vore
HOWARD A. DEWEY
Mrs. Ruth W. Dewey
SACRAMENTO DIAZ, JR.
Mrs. Wanda Diaz
DR. RUDOLPH DIETHELM
Mrs. Warren Baird
WILLIAM P.H. DIETZ
Mrs. Elsie H. Dietz
MRS. ELVA DIMMERLING
Ms. Lois R. Learned
WILFRED G. DIPLOCK
Mr. & Mrs. Russell R. Harris
JOHN DITTMAYER
Mrs. Anna M. Carlton
Dittmeyer
MRS. GRACE DIXON
Marshall Dixon, Jr.
PAULL E. DIXON
Mr. & Mrs. Ed Blackburn, Jr.
MRS. MARY DOAK
Col. John W. Doak
NEIL DOBBELAIRE
Mr. & Mrs. Ray A. Throop
POLLY GRAHAM DOLLAR
Mr. & Mrs. Lamar Graham
ROBERT M. DONNELL
Mr. & Mrs. Jess F. Donnell
MRS. M.J. DONNELLY
Mrs. Louise Ellington
NEAL DONOVAN
Mrs. Mildred Donovan
JOHN E. DORAN
Mr. & Mrs. John C. Doran
MRS. LEAH DORSEY
Mr. & Mrs. Edwin H. Rohde
OSCAR L. DORSEY
Mrs. Virginia F. Dorsey
MRS. LEAH B. DOSSEY
Mrs. Kenneth O. Caldwell
WHEATON DOUGLASS
Mrs. Wheaton Douglass
CHARLES H. DOW
Mr. & Mrs. Herbert C. Scobie
Johnnie W. Guthrie
DELBERT H. DOWDEN
Mrs. Gladys Christie
CLARENCE E. DOWLING
Mrs. Marie J. Dowling
BEN L. DOWNS
Mrs. Ben L. Downs
CLEMENS DRACHE
Mrs. Clara Drache
CHARLES DRAKE
James Neblett
GEORGE A. DRAVILLAS
Mrs. Edna A. Seal
CLIFFORD P. DRESSNER
Mrs. Clifford P. Dressner
DR. J. RAE DRISCOLL
Mrs. Vernita C. Driscoll
WILLIAM DROEGE
Mr. & Mrs. C.J. Cassidy
EDWARD J. DRUMM
Mr. & Mrs. Edward A. Frank
DR. CYRIL E. DRYSDALE
Mrs. Jean M. Drysdale
F.E. DUBOSE
Col. & Mrs. Preston B. Hardy
ANN K. DUMAS
Mrs. Lenore D. Keyworth
F.B. DUNCAN
Mr. & Mrs. W.C. Winfree, Jr.
HARRY C. DUNCAN
William Y. Akerman
GEORGE DUNNING
Harold K. Buttlieman
DOROTHY A. DUPUIS
Mr. & Mrs. Joseph A. Dupuis
L. ROY DURDEN
Mr. & Mrs. James M. Bush
Mr. & Mrs. Bob Brandt
ANTON & JOSEPHINE DUSHEK
Mr. & Mrs. Louis J. Dushek
SHERIFF EARL DYESS
Mr. & Mrs. W.R. Pervis

CHARLES W. EARL
Mr. & Mrs. Richard W.
Weitzenfeld
ELIZABETH EBINGER
Fred J. Ebinger
ETHEL EBINGER
Fred J. Ebinger
LAVENIA EBINGER
Fred J. Ebinger
RUTH EBINGER
Fred J. Ebinger
WILLIAM H. ECCLESTON, SR.
Mrs. William H. Eccleston, Sr.
EUGENE F. ECKLER
Mrs. Evelyn E. Eckler
HARRY W. EDGE
Mrs. Jessie A. Edge
CLARA EDMONDS
Mr. & Mrs. John C. Johnson
Esperance Johnson
WESLEY T. EDMONDS
Mrs. Maudie E. Edmonds
JEFFREY EGAN
Mrs. Mary Egan
MRS. HELEN EICHLIN
Mrs. Alice M. Williamson
MRS. NEVA EISENBACH
Ms. Grace K. Kinney
Ms. Anna Kinney
Steven Nelson
Ms. Patricia A. Gaberdiel
Ms. Kim C. Hammond
Mr. & Mrs. Larry S. Moody, Sr.
MRS. ETHEL EKLUND
Mr. & Mrs. Arthur E. Timm
FLORENCE EKSTAM
Mrs. Margaret Malley
GEORGIA ELDRIDGE
Miss Mary Barker
GROVER ELDRIDGE
Miss Mary Barker
MRS. BERNICE L. ELLIOTT
John D. Elliott
FRANK E. ELLIS
Mrs. Linnie E. Dalbeck
CHARLES E. ELY
Mrs. Charles E. Ely
DALE E. ELZEY
Mrs. Dale E. Elzey
ANTHONY & ROSE EPIFANO
Mr. & Mrs. Joseph E. Kennedy
DAVID ETHERINGTON
Mr. & Mrs. Clem Pearson
TODD EUBANKS
Mr. & Mrs. Johnny M.
Halley, Jr.
Mr. & Mrs. Reese Revell, Jr.
Mr. & Mrs. Michael Tucker
ED EVERETT
Mrs. Laura A. Eide
ORRIS R. EVERS
Mrs. Ruby Evers
JOHN E. EWEN
Mrs. Margaret W. Ewen

F

MRS. MARIAN POWELL FAGAN
Clemons Heating & A/C
Employees
Mr. & Mrs. B.A. Newsome
HENRY R. FALANY
Mr. & Mrs. Henry Potter
MRS. ELLA FALKENBERRY
Mr. & Mrs. Floyd M.
Falkenberg
EDWIN DEWITT FAMBROUGH
Mrs. Edwin D. Fambrough
GORDON FARMER
Mrs. Semora W. Remer
MRS. RICHARD E. FARMER
Richard E. Farmer
EARL J. FAULK
Mrs. Earl J. Faulk
PAUL FAUSTINI
Mr. & Mrs. John Faustini
JULIAN FAUVRE
Mrs. Weyman Willingham, Sr.
PAUL FEASTER
Mr. & Mrs. Walter Barberie

THOMAS FELS Mr. & Mrs. George A. Martin	JANE P. FRYER Mrs. Edwin F. Papworth	DR. DAVID W. GODDARD Mrs. Jeanne M. Goddard	SYLVESTER GUTELIUS Mrs. Mary Gutelius	CHARLES HEARN, SR. Mr. & Mrs. Bob Clawson	ERNEST HOLLINGSWORTH Mr. & Mrs. Arland McCall & Heather
MARGARET A. FELTON Harry L. Felton	MRS. ELSA FUHRER Miss Elsa M. Fuhrer	MRS. ALICE D. GOLDE Leonard T. Golde	J.H. GUY Mr. & Mrs. William G. Hendricks	MR. & Mrs. Frank C. Giberti	RALPH HOLOPIREK Mrs. Ralph Holopirek, Jr.
JAMES T. FERGUSON Miss Mary K. Ferguson	J.G. FULFORD A.P. Bell Fish Co., Inc.	GEORGE B. GOLDER Mrs. Marya Golder	EDWARD H. GUYER Mrs. Lillian B. Guyer	MRS. MARGARET M. HECKROTH Mr. & Mrs. Ralph T. Heckroth	FRED HOLWILL Mrs. Lavona W. Holwill
DR. WILLIAM M. FERGUSON Sheriff & Mrs. Lucian J. Hindery	CLYDE A. FULFORD, SR. Mrs. Aletha P. Littell	ALICE AYERS GOLDNER Mr. & Mrs. W.T. Carlton		HARRY HEIDEMANN Mrs. Clara Heidemann	MR. & Mrs. FRANK E. HOOK Mr. & Mrs. Arthur J. Savage
JOHN & ANNA FEULNER Mr. & Mrs. Andrew J. Feulner	NEWCOMB FULLER Mrs. Newcomb Fuller	LEON S. GOLLNICK Mrs. Leon S. Gollnick	H	MRS. MARY E. HEIDRICH Mrs. Victor H. Heidrich	HOMER HOOKS Mrs. Homer Hooks
HAROLD M. FIEDLER Charlotte County Sheriff's Dept. Employees U-Save Employees	MRS. ELLA FULLERTON Mr. & Mrs. William K. Small	MARVEL GOLLNICK Justine Gunn	MRS. FLORENCE HAAS Mr. & Mrs. Robert F. Sims	ALBERT H. HELGENBERG Mr. & Mrs. Edward J. Helgenberg	MRS. NELLIE L. HOOKS Mr. & Mrs. Orrie H. Simonds
PAUL FIELD Miss Hazel E. Kimball	MRS. BERTHA S. FURST Col. & Mrs. R.O. Pennepacker	DOROTHY D. GORDON Ms. Mary E. Monaghan	JOSEPH HABORA Mr. & Mrs. Robert H. Cavin	HOWARD & MAE HELGENBERG Mr. & Mrs. Edward J. Helgenberg	HERBERT HOOVER Mrs. Betty Calathes
BETTY FIELDS Mrs. Esther McLean	MR. & MRS. FRANCOIS FUSILIER Father Paul M. Fusilier	SUSAN GORDON Mr. & Mrs. James L. Pogue	JOHN HACKOS Mrs. Bertha W. Hackos	CLAIR HELPMAN Mr. & Mrs. Walter G. Harrison	WILLARD F. HOPKINS Mrs. Elizabeth A. Reevy
VERA FIELDS Mr. & Mrs. Robert A. Peterson	G	MRS. RUTH L. GORING Sheriff & Mrs. Lucian J. Hindery	GEORGE HADACEK Mr. & Mrs. Arthur Goyette	FRANCES P. HENDERSON Mr. & Mrs. Howard Hill	STANLEY F. HORTON Mrs. Flora T. Horton
W.J. FIFIELD Mr. & Mrs. George W. Haynes	LEONARD H. GAGLIARDI Mrs. Helen V. Miller	MARY O. GORMAN Mrs. George Weitzel	COL. HARRY RICH HALE Mrs. Harry Hale	R.L. HENDERSON Mrs. Deratha C. Henderson	WOLFIE HORWITZ Mrs. Sophia Landsman
JOSEPH B. FILLINGER Mrs. Marie Fillingier	LOLA GALL Owen E. Gall	CDR GERALD GOULDRUP Mrs. Dorothy Gouldrup	ALBERT HALL Mr. & Mrs. Burton Merle	JOHN HENDERSON, JR. Mrs. Marie Henderson	JAMES HOUGHTON Mr. & Mrs. Leonard A. Brice Mrs. Esther McLean
JOHN W. FICKENSCHER Mrs. J.W. Fickenschier	WALTER GALL Owen E. Gall & Family	KENNETH GRADY Mrs. Alice Louise Lungerhausen	GEORGE HALL George D. Hall	JOSEPH R. HENDL Mrs. Margaret L. Hendl	MRS. RANDY HOUGLAND Mr. & Mrs. Ed Tietjen
MRS. OLIVE FINLEY Charles L. Finley	ANDREW GALLAPO Mr. & Mrs. Alex Rotella	CAREY F. CARLTON Mr. & Mrs. Gerald Darroh	H.G. HALL Mrs. Nellie B. Hall	FRED HENDRICKSON Mrs. Fred Hendrickson	MRS. TILLA HOUK Sheriff & Mrs. Joe Sheppard
AMBROSE P. FINN, JR. Mrs. R. Edward Garn	H.R. GANTZ Mr. & Mrs. William S. Davis	MR. & Mrs. Buck McIntyre Sheriff & Mrs. Joe Sheppard	SHEILA B. HALLORAN Ms. Kathleen C. Sohl	ROSEMARY HERBERT Andrew J. Herbert	MRS. JANE HOWELL Mrs. Kenneth A. Howell
STANWOOD E. FISHER Mrs. Audrey G. Fisher	ELIONNE GARDNER Mr. & Mrs. Lewis H. Fogle, Jr.	GEORGE W. GRAHAM Mrs. Marguerite Graham	LT. ALFRED HAMESTER Mrs. Alma E. Hamester	MRS. JESSIE HERBSTREIT Ms. Audrey Stahl	EDNA F. HOWELLS Mrs. Eloise J. Meidinger
RICKY FITZGERALD Mr. & Mrs. James P. Fitzgerald	HAROLD GARBERS Mrs. Harold W. Garbers	ROBERT D. GRAHAM Mrs. Toy Karpinen	PAUL B. HAMILTON Mrs. Agnes Hamilton	CATHERINE HERMAN American Legion Jane A. Delano Post No. 122	NELSON P. HOWLAND Mrs. Emmett Tweedy
RUSSELL G. FLOSS Mrs. Russell G. Floss	ELIONNE GARDNER Mr. & Mrs. John Colgan Norman, Jr.	RAY F. GRAMENSTETTER Mrs. Rhea Gramenstetter	JOHN HAMLET Mrs. Mary Jane Tekip	ROBERT H. HEROLD Mrs. Robert H. Herold	LEWIS HOWZE Ms. Dorothy T. Trevelyan
JUDITH FLUHR Mrs. George Fluhr	MRS. MAYME J. GASLIN Raymond W. Gaslin	MR. & Mrs. O.D. GRANDINETTI CWO Robert G. Grandinetti	WILFRED HAMPSON Mrs. Elizabeth H. Murdock	PAMELA JONES HERRON Mrs. Rheta R. Jones	Redmond P. Dorch, Jr. Mr. & Mrs. John H. Graham Mrs. Elizabeth M. Burton
MRS. ALTHEA ESTELIE FORD Mr. & Mrs. W.H. Marzyck, Jr.	MRS. PERCIS GAULIN Wilfred Gaulin	MR. & Mrs. B.W. GRANT Mr. & Mrs. Thomas J. Shook	RALPH HANNERS Mrs. Ralph L. Hanners	MRS. EDITH I. HESS Mrs. G.W. Bennett	ALBERT C. Hess
MASON F. FORD Mrs. Dorothy B. Ford	JACQUELYN GAUSS Ms. Susan N. Roberts	LUTHER GRANT Mr. & Mrs. Leslie Eugene Avant	HERBERT A. HANSEN Herbert R. Hansen	GEORGE M. HESSNER Mr. & Mrs. Robert M. Best	CHARLES L. HUGHES Mrs. Clara H. Hughes
EDWARD E. FORT Mrs. Alma D. Fort	ANDERSON GAY Mrs. Anderson John Gay	LOUIS O. GRAVELY, JR. Mrs. Gertrude M. Gravelly	RUSSELL L. HANSEN Mr. & Mrs. Hubert Weeks	WILLIAM REFFRY HESTER Sheriff & Mrs. Lucian J. Hindery	CURTIS W. HUGHES Mr. & Mrs. Richard W. Weitzenfeld
THEODORE FOSKITT Mr. & Mrs. Rick Davis	FULTON GAY Mrs. Doris H. Gay	RAY GRAVES Sheriff & Mrs. Don Moreland	SAM HANSEN Mrs. Eva Hansen	JOHN R. HEUBACH Sheriff Glen E. Sapp	EDWARD V. HUGHES Mr. & Mrs. Joseph G. Merrell
Alex and Julianna Davis	DONNA RAE GEAR Mr. & Mrs. Harold W. Gear	MRS. FLORENCE GRAY Egerton M. Gray	J. HENRY HARDEN Dr. R. Terrell Puckett	MRS. MAUDE A. HARDING Kleber J. Perry	JIM HUGHES Hare Farms Herbert & Cliff Hare
Mr. & Mrs. Chuck Krause	MRS. CASSIE G. GENTRY Ms. Ida B. Cherry	JAMES GRAY Miss Mary G. Cary	MRS. MAUDE A. HARDING Kleber J. Perry	MRS. BETTY A. HARING Harold H. Haring	HENRY H. HULL Mrs. Gretchen T. Hull
Ms. Hazel Morin	ROSA MAE GENTRY Mr. & Mrs. W.C. Gentry	MRS. LILLIAN H. GRAY Roy Lillian Gray	GEORGE HARMAN Mr. & Mrs. Al Harmon	GEORGE HARMAN Mr. & Mrs. Al Harmon	JOANNA PRENTISS HULTS Mrs. Vera M. Prentiss
Ms. Margaret Strassberger	JEAN E. GENTRY Mr. & Mrs. George B. Davidson	LOWELL M. GRAY Mrs. Agnes G. Gray	MRS. ANNIE HARMS Mr. & Mrs. Ralph Dirk	DR. EDWARD G. HILBERT Mr. & Mrs. John L. Kattler	JOHN B. HUNZIKER Mrs. Maria T. Hunziker
Mr. & Mrs. William L. Fowler	ERIC G. GEORES Mrs. Mildred A. Geores	LOWELL M. GRAY, JR. Mrs. Agnes G. Gray	LILLIAN MAY HARRINGTON Mr. & Mrs. Harry Hancock	HUBERT A. HILL Mrs. Velma Boone Bradshaw	MRS. GRACE D. HURDER Robert L. Horton
Ms. Ida B. Wolfe	PETER GERNER Mrs. Peter Gerner	RAY E. GREEN, SR. Mrs. Joyce Bramblett	GRANNY HARRIS Ms. Marjorie S. Nossler	MR. & Mrs. WILLIAM HINZ Mr. & Mrs. George H. Tews	COL. EDWARD L. HURLBURT Mrs. Edward L. Hurlburt
LILLIAN S. FOSTER Mrs. Lillian S. Vavra	HARRY GERRAS Mrs. Mary Gerras	MS. JEWELL JONES Mr. & Mrs. Wilfred C. Varn	LEROY HARRIS, JR. Mr. & Mrs. Robert C. Crooks	JOSEPH L. HISLE Mrs. Joseph L. Hisle	WALTER B. HUTCHINGS Mrs. Pearl M. Hutchings
RUSSELL L. FOURMAN Mrs. Fai Stainbrook	DR. MURRAY GESSNER Mrs. Grace Z. Gessner	JEROME D. GREENEBAUM Mrs. Jerome D. Greenebaum	PERCY LEE HARSHBERGER Mr. & Mrs. Jack Jellison	MR. & Mrs. WILLIAM HINZ Mr. & Mrs. George H. Tews	WALTER C. HUTCHINSON Mrs. Margaret V. Hutchinson
C.C. Garrett	EFSTATHIOS B. GIANIOTIS Mrs. Eleftherice Gianiotes	BEN GREENSPAN Mrs. Helen L. Thornton	SHERMAN HARTNETT Mrs. Sherman Hartnett	MRS. BARBARA HODGSON Mr. & Mrs. Fred A. Macnutt, Jr.	Dr. & Mrs. W.E. Copenhaver
MRS. EMMA FOUST Ralph C. Stokes	JAMES GIANOLIO Mrs. Marie Gianolio	MS. THERESA THORNTON	L. WESTCOTT HARTSFIELD Mr. & Mrs. S. Jack Carrouth	MRS. AGNES M. HOEHLER Fred W. Hoehler, Jr.	CHARLES & CORA MAE HYDE Mr. & Mrs. C.V. McClaran
WILLIAM G. FOWLER Mrs. Patricia G. Fowler	DONALD B. GIBBS Mr. & Mrs. Omar B. Gibbs	AGNES GREER Mrs. Alice G. Bradley	LEONARD HARTUNG Mrs. Maryellen Hartung	VERNON A. HOENES Mrs. Vernon A. Hoenes	
WENDELL FOX Mrs. Gertrude Fox	SAMUEL SPENCER GILBERT, JR. Mr. & Mrs. Donald S. Taylor	DOROTHY M. GREGG Mrs. Theresa J. Hill	JAMES HATCHER Ms. Irah Lee Hatcher	WALTER J. HOFFMAN Thomas Hoffman	
ROBERT A. FRANCIS, SR. Dr. & Mrs. Larry C. Deeb	EARL GILCHRIST Mrs. Minnie C. Gilchrist	G. SCOTT GREGORY Miss Mae T. Gregory	ANNA & CONIE HAUSERLEV Anthony D. McCluskey	MRS. ANNA LOLA HOFMANN Mrs. Nellie L. Schmieder	IN MEMORY Mrs. George H. James
EDWARD FRANK Mr. & Mrs. Wes Frank	DONALD L. GILL Ms. Donna M. Gill	ROBERT A. GREISIGER Mrs. Frieda K. Greisiger	FRED HAWKINS Mrs. Fred Hawkins	WALTER J. HOFFMAN Thomas Hoffman	PATSY INGLESE Russell Inglese
MARY & GEORGE FRANK Mr. & Mrs. Edward A. Frank	DAVID LEE GILL, JR. Mr. & Mrs. Samuel B. Gill, Jr.	MRS. ANN GREMLI Mr. & Mrs. George Hunter	MYRON D. HAWKINS Mrs. Joel B. McLean	MRS. ANNA LOLA HOFMANN Mrs. Nellie L. Schmieder	DAN HOGAN Mr. & Mrs. Don H. Wilson
MADLINE FRANKLIN Mr. & Mrs. Ernest C. Rich	PAUL GILMORE Mrs. Leona K. Gilmore	JOHN J. GRIFFIN Mrs. Minnie Griffin	JUNE HAYDEN Stephen Schlitzer	WILLIAM HOGAN Mr. & Mrs. Daniel P. McCarthy	MR. & Mrs. MARGIE INNES Mr. & Mrs. George A. Wells
ALFRED FRASHER Justin J. Ford	MR. & Mrs. C.C. GILPIN Miss Doris Gilpin	MRS. MARGUERITE GRIFFIN Mr. & Mrs. Victor B. Yeats	HERBERT R. HAYES Mrs. Mildred Hayes	KURT O. HOHNE Mrs. Mabel G. Hohne	LAWTON IRVINE Mrs. Emily J. Irvine
MR. & Mrs. RAY FREEMAN Mr. & Mrs. Raymond M. Patterson	JOSEPH GIRARD Ben J. Giarraputo	LOUISE & HENRY GROSS Mr. & Mrs. William D. Solt	LESTER HOLBROOK Mrs. Gladys M. Waitt	SENATOR GEORGE L. HOLLAHAN Ms. M.T. Shuman	COY S. ISAACS Mr. & Mrs. William B. Gathings
MR. & Mrs. Robert A. Vest	DEBBIE GIVENS Mrs. Dorothy H. Givens	DOROTHY GRUMBACH Otto E. Grumbach	JOHN M. HOLCOMB Mrs. Pauline K. Holcomb	MR. & Mrs. ROGER S. HOLLER, SR. Mr. & Mrs. Carl Dauksch	Mrs. Roseanne Galaba Mrs. Constance E. Schmidt
MRS. ELLA MAE FREUDENBERGER Mrs. Gladys M. Waitt	WILLIAM C. GIVENS Mrs. William C. Givens	GEORGE F. GUILBERT Dermody & Webb, Inc.	ELMER C. HAYMON Mr. & Mrs. J.R. Hoolehan, Sr.	The Forty West Gay Realty Company	WILLIAM F. IVES Mrs. Barbara L. Ives
HAROLD C. FREY Mrs. Nellie B. Kaufman	MRS. HARRIET GENEVA GLICKMAN Dr. & Mrs. L. Grant Glickman	JOSEPH GUILFOIL Mrs. Joseph T. Guilfoil	WILLIAM L. HAZELTINE Mrs. Minnie Hazeltine		
GEORGE FRID Mr. & Mrs. Elmer L. Morgan	WARREN & FRIEDA V. GODDARD Trust of Frieda V. Goddard	MRS. RUTH GUILLEN Miguel Guillen	ALBERT HAZELTON Mrs. Albert Hazelton	J	CECIL JACOBS Mrs. Phil Shaw, Sr.
MRS. MARY FRIGANO Samuel Frigano					RUTH JACOBSON Mr. & Mrs. Milton D. Lieberman
MRS. LORRAINE PATE FRINK Ms. Leona S. McLarnan					
Mrs. Aubrey Jones					
MR. & Mrs. W.W. FRITZ Mr. & Mrs. Charles C. Kalinowski					

MRS. ANNA M. JAESCHKE
Mr. & Mrs. Robert C. Howells

MRS. FRANCES JAKUBIC
Mr. & Mrs. Anton Frigo

MR. & MRS. JOSEPH E. JAMIESON
Mr. & Mrs. James J. Cuker

ANTHONY & ROBERT JANOSKY
Mrs. Nellie F. Janosky

MRS. MADELEINE JARRY
Mrs. Aline L. Murray

M. CLAUDE JENKINS
Mrs. M. Claude Jenkins

RALPH JENKINS
Mrs. Ralph Jenkins

ELSIE B. JENKS
Mr. & Mrs. Andrew L. Janes

ALLAN K. JENNINGS
Dr. & Mrs. William E. Jennings

JERRY M. JENNINGS
Mr. & Mrs. Charles Jennings

DR. JOHN L. JENNINGS
Mr. & Mrs. William S. Davis

MRS. PEGGY JENSEN
Mr. & Mrs. H.L. Crutchfield

CHARLES C. JEWETT
Mrs. Charles C. Jewett

PREBEN JOHANSEN
Mr. & Mrs. James D. Goodloe

OSCAR H. JOHANSSON
Mrs. Oscar H. Johansson

RICHARD JOHN
Louis Aerts

MRS. MARGARET L. JOHNS
Frank C. Brandon

CURTIS JOHNSON
Mr. & Mrs. Jewell Hollingsworth
Mrs. Effie Middleton
Ms. Oida Deload

EARL A. JOHNSON
Mrs. Earl A. Johnson

MRS. ESTHER E. JOHNSON
Alban F. Johnson

MRS. FRANCES JOHNSON
Mr. & Mrs. Frederick P. Schrage

MRS. HARLAN T. JOHNSON
Mrs. Virginia C. Head

HELEN JOHNSON
Mrs. Sylvia S. Vanselow

LAWRENCE C. JOHNSON
Mr. & Mrs. Luther L. Bender
Mr. & Mrs. Charles J. Murphy
Friends and Neighbors
Mr. & Mrs. Carroll P. Anderson
Mr. & Mrs. Albert Perrin

RALPH M. JOHNSON
Walter V. Culley, Sr.
Mr. & Mrs. Gordon Long

RAYMOND W. JOHNSON
Mrs. Margaret V. Johnson

MRS. RUTH N. JOHNSON
Ehard E. Johnson

MRS. ELISABETH S. JONES
Robert J. Jones

GARY MARK JONES
Mr. & Mrs. Julius Olchon

JACK JONES
Sheriff & Mrs. Joe Sheppard

JAMES A. JONES
John Law Ayers

MAJ. M. HAYNSWORTH JONES
Mrs. Julia R. Jones

RICHARD & SAM JONES
Mrs. Lula Mae Jones

SGT. ROBERT J. JONES
Mr. & Mrs. John C. Jones

LT. COL. EUGENE C. JORDAN
Mrs. Eugene Jordan

PAUL J. JORDAN
Mrs. Elizabeth J. Jordan

MRS. ETHEL JOST
Mr. & Mrs. Harry B. Depriest

WILLIAM R. JOWDY
Edward J. Jowdy

FRED JUDGE
Mrs. Elsie Judge

K

MRS. ORA KAISER
Mr. & Mrs. James Brettingen
Mr. & Mrs. Harry K. Weaver

MRS. HARRIET L. KALWAY
John W. Kalway

SAMUEL M. KANE
Mrs. Elizabeth M. Kane

WALTER F. KANNENBERG
Mrs. O.M. Thomsen
Mrs. Grace M. Terlizzi

GEORGE KAPPENBERG
Mrs. George Kappenberg

MRS. MARIE E. KAROL
Melvin Karol

KENNETH KARSOE
Col. & Mrs. Ray W. Koontz

WILLIAM KASHMAN
Mrs. William Kashman

S.B. KASTEN
Mr. & Mrs. William F. Henderson

JEAN KATIBAH
Mr. & Mrs. E. Lamar McMath

GEORGE KATROS
Mrs. Rea G. Katros

HERMAN KAUTZ
Mr. & Mrs. Jerry Herolt

CHARLES KECK
Mrs. Charles Keck

EDWARD A. KEEL
Miss Susie Nell Smith

R.E. KEEN
Mrs. Julia S. Keen

KEVIN J. KEENEY
Mr. & Mrs. Curtis E. Mantford

SIDNEY G. KEEVIL
Mrs. Sidney G. Keevil

PAUL S. KEISER
Mrs. Josephine C. Keiser

WINSTON & SUNNY KEITH
Mr. & Mrs. Robert Carpenter

BARBARA JANE KEITHLIN
Mr. & Mrs. Arnold Keithlin

ERIC KELLER
Mr. & Mrs. P.J. Scotten

JAMES KELLER
Mr. & Mrs. P.J. Scotten

FRANK J. KELLEY
Mr. & Mrs. Dan L. Autrey, Jr.
Mr. & Mrs. Earlo Tanner
Mr. & Mrs. Ham Brown
The Grissoms
Mrs. Edna A. Seel
Mr. & Mrs. John E. Carroll, Sr.
Mr. & Mrs. Arthur E. Logsdon, Sr.
Mr. & Mrs. Edward Knechel
Mrs. Rose Bronson Elsey
Mr. & Mrs. Jerry Ivey
Dr. & Mrs. Donald S. Brown
Babe & Amy Grissom
Mrs. Ruth H. Littlefield
Ms. Betty Jane Dyer
Mr. & Mrs. J. Robert Crowell
Ladies Golf Association
Mrs. Elizabeth M. Graves
Mr. & Mrs. Hansel Johnson
Mr. & Mrs. Edwin H. Rohde
Mr. & Mrs. Ronald B. Story
Lewis Lee
Mr. & Mrs. Henry H. Partin, Sr.
Ms. Mary B. Bronson

MRS. OLLIE KELLEY
Mr. & Mrs. Vernon F. Vineyard

ROBERT KENNEDY
Mr. & Mrs. Carl Walden

MRS. MARGARET KENNELLY
Joseph J. Kennelly

CAPT. CLIFFORD S. KENT
Mr. & Mrs. E.E. Kelley
William Cain
Mr. & Mrs. Warren F. Dalton
Mr. & Mrs. Edgar Parsley
Mr. & Mrs. Allen Eschrich
Mrs. LaVerna Deppeler
Mr. & Mrs. David A. Eschrich
Mrs. Helen Walker
Harry Leturkey

GEORGE M. KERMODE
Mrs. Kathryn V. Kermode

JOHN H. STUBBY KERNS
Mr. & Mrs. Barron F. Shields

RANDY KETT
Mr. & Mrs. Charles Quenzer

EDWARD C. KEYWORTH
Mrs. Lenore D. Keyworth
Mr. & Mrs. Jack S. Schroder, Jr.

MRS. M. ELIZABETH KIBLER
Thomas J. Kibler

MRS. JOHN KIDD
Mrs. Marion J. Sundell

JAMES KIGGINS
Mr. & Mrs. Joseph Moser, Jr.

FRED KILLE
Mr. & Mrs. Frank T. McGuigan

ERICH KINDLER
Mr. & Mrs. Alexander Hirschberg

BOB KING
Mrs. Chlotilde S. White

EDITH KING
William E. King, Sr.

JOSEPH A. KING
Mrs. Edna A. King

TOWER W. KING
Mrs. Charlotte R. King

EDWARD KINSELLA
Mrs. Edward KinSELLA

DAVID G. KITE
Mr. & Mrs. A.W.D. Harris

JOHN A. KLING
Mrs. Janet B. Kling
Rick Kling

MATTHEW GEORGE KLOSEK
Mrs. Josephine Klosek

MRS. A.J. KNIGHT
Mrs. Barbara McCall & Sean

JOSEPH KNIGHT
Mr. & Mrs. A.G. Stefurak

RICHARD KNIGHT
David Schildiner

WILLIAM J. SKIP KNIGHT
Mr. & Mrs. J.E. Knight, Sr.

MRS. ELEANOR KNIGHTLY
Mr. & Mrs. H.C. Duncan

RAY KNIPE
Mrs. Arthur R. Felsen
Mr. & Mrs. Arthur L. Haskins

FRED KNOFFLOCH
Mrs. Fred Knoffloch

PETER M. KNUDSEN
Mrs. Viola G. Knudsen

CLAYTON R. KOBER
Mrs. Florence F. Kober

RAYMOND C. KOCH
Mrs. Florence E. Koch

MRS. WILMA I. KOCH
Carey F. Carlton

HARRY C. KOMINSKI
Mrs. Mary Kominski

JOSEPH KOPF
Otto A. Lawrenz
Mrs. Joseph H. Kopf

BASHIR M. KOURY
Benedict Koury

FRANK KOYL
Mr. & Mrs. Bennie Brisson
Ms. Nicki Lynn Brisson
Mr. & Mrs. Acrite J. Givens
Anonymous

EDWARD KREB
Mrs. Helen Hopppaugh

HARRY J. KRESS
Mrs. Marie S. Kress

PAUL R. KRETZING
Mr. & Mrs. Joseph V. Tyson

JOHN KRIDER
Mrs. John Krider

FRANK K. KRIZ, SR.
Mrs. Frank K. Kriz, Sr.

HAROLD J. KRONENBERG
Mrs. Harold J. Kronenberg

MRS. BERTHA A. KROOK
Mr. & Mrs. Gene D. Eckert

MELVIN H. KROUT
Mrs. Melvin H. KROUT

EDWIN D. KRUPPO
Mrs. Ruth Kruppo
Norma Meierdirk

FLORENCE KUPELAVIC
Sam P. Kubelavic

MRS. MARY KUCHENMEISTER
Harvey S. Gullickson

MRS. HELEN KULHAWIK
Boleslaw Kulhawik

MARTHA KURJIAN
Mrs. Ada F. Moore
Ms. Catherine Bakken

CARL KURTGIS
Ms. Mary B. Bronson

HENRY KURZ
Mrs. Henry Kurz

L

EARL LA DUC
Mrs. Bertha P. Bobbitt

JOANNA LADIKI
Mr. & Mrs. William S. Davis

MRS. LIZZIE LAMAR
Sheriff & Mrs. Joe Sheppard

DWIGHT & JOE LAMBE
Mrs. Dwight W. Lambe

IRVING W. LANDER
Mrs. Walter Lander

WALTER M. LANDER
Mrs. Walter Lander

GEMMY LANE
LTC & Mrs. Charles L. Lane

CAMPBELL LANG
Mr. & Mrs. Jimmy O. Biddle

ROBERT CAMPBELL LANG, JR.
Mrs. Lucy Lang

CAPT. BRUCE LARSON
Mrs. Ted D. Larson

TED D. LARSON
Mrs. Ted D. Larson

ANNE MARIE LASSMANN
Mr. & Mrs. Roert G. Klos

LT. JOHN H. LATTIN
Col. & Mrs. John H. Lattin

MRS. EDITH J. LAURENT
Mrs. Harold Streater

FREDERICK E. LAUTER, JR.
Mrs. Suzanne Lauter

FREDERICK E. LAUTER, SR.
Mrs. Suzanne Lauter

DOROTHY LAWRENCE
Mr. & Mrs. Vernon F. Vineyard

G.A. LAWSON
Mrs. Anna V. Lawson

HERMAN LAY
Mr. & Mrs. Glen P. Woodard

RONALD E. LAYTON
Mr. & Mrs. Earl Layton

EARL LE DUC
Mr. & Mrs. Clarence E. Pheil

ROBERT & EVELYN LEAPHART
Mr. & Mrs. Robert P. Leaphart

MRS. EDNA B. LEAVENGOOD
R.I. Leavengood

CHARLES ALVIN LEDFOED
Mr. & Mrs. Claude Tanner

PERRY F. LEDIARD
Mrs. Irene G. Lediard

DONALD LEE
Mr. & Mrs. George Gunter

MRS. OWEN LEEK
Mr. & Mrs. Edwin B. Bassett

ALFRED LEFEBVRE
Mrs. Alfred Lefebvre

LILA PALMER LEHMAN
Mrs. Florine L. Way

WARREN LEHMAN
Mrs. Florine L. Way

FRANK LEISINGER
Mrs. Anne S. Everett

JACK LEONARDI
Mrs. Irma K. Messler

KENNETH G. LERKINS
Mrs. Kenneth G. Lerkins

ERNEST LEVESQUE
Frances Levesque

MRS. HELEN LEVY
Morris D. Nahmias

MRS. ADDIE LEWIS
Sheriff & Mrs. Joe Sheppard

MRS. ELIZABETH V. LEWIS
Mr. & Mrs. H.E. Edmunds

ERNIE LEWIS
Mrs. Irma K. Messler

GARTH L. LEWIS
Ms. Jackie Byrd

JOHN F. LEWIS
Mrs. Constance E. Schmidt

TOFICH LEWIS
Mr. & Mrs. Francis E. Merrifield
Dr. & Mrs. Charles J. Roehm

ROSE LI ROSI
Carmine Li Rosi

JIM LIBKEY
Mr. & Mrs. Frank Wells

NORMAN E. LILGA
Mr. & Mrs. J. Earl Steinhauer

DR. & MRS. S.A. LINDSEY
Mr. & Mrs. W.J. Durrance

MRS. VILETA LINGO
Mrs. Allen C. Winters

THOMAS M. LITTLE
Mrs. Thomas M. Little

THOMAS E. LIVEZEY, JR.
Mr. & Mrs. Thomas E. Livezey

ELIZABETH GREGORY LIVINGSTON
Mr. & Mrs. W.N. Purcell
Mr. & Mrs. Seymour C. Mickler
Sumner R. Lowe
Mr. & Mrs. H.M. Coachman

KENDALL O. LLEWELLYN
Mr. & Mrs. David H. Carter, Jr.

WILLIAM J. LOCK
Mrs. William J. Lock

CHARLES J. LOCKTON
Mrs. Christina L. Lockton

MR. & MRS. GUY E. LOCKWOOD
Mr. & Mrs. Jimmy B. Taylor

THOMAS LOGOS
Mr. & Mrs. Willis Molloy

ARTHUR E. LOGSDON, JR.
Mr. & Mrs. James Sabetto

BERTIE & TONY LOHKAMP
Mr. & Mrs. James M. Williams

MRS. RUTH W. LONG
Henry L. Long

MRS. FLORENCE LOOK
Mr. & Mrs. Hawley D. Blake

ROBERT LOSEY
Mr. & Mrs. Harold Losey

EDWARD LOUISO
Mr. & Mrs. Roy Wendell

ROBERT W. LOUVAIN
Ms. Suzanne L. Yardowski

JOHN J. LOVEDAY
Mrs. Jeanne M. Loveday
Miss Sophia K. Golba

GORDON E. LOVETT
Mrs. Margaret Lovett

JOHN H. LOVETT
Mrs. John H. Lovett

JAMES LOWDER
Jack R. Lowder

RALPH LOWDER
Jack R. Lowder

RICHARD & SALLY LOWDER
Jack R. Lowder

SALLY JEAN LOWDER
Jack R. Lowder

T.R. LOWDER
Jack R. Lowder

GRAHAM LOWDON
Mr. & Mrs. William C. Ludi

CLARENCE L. LOWELL
Mrs. Rita Lowell

JOHN LOWRY
Mrs. John Lowry

MRS. ALICE E. LUCAS
Johnnie W. Guthrie

HENDRIX F. LUCAS
Mr. & Mrs. A.H. Martin

WILLIAM F. LUCAS
Mrs. William F. Lucas

MR. & MRS. MICHAEL LUCATUORTO
Mr. & Mrs. Nicholas Serino

ENOCH FRED LUCIUS
Mrs. Ruth H. Littlefield

MRS. ELSIE LUKACSY
John J. Lukacsy, Jr.

MRS. ADELE LUNA
Miss Helen Scuggs

CONRAD LUTZ
Mrs. Ethel Lutz

EVELYN & DICK LUTZ
Mr. & Mrs. James J. Britt, III
Mrs. Mary Louise Tighe

JOHN LYDEN
Miss Martha A. Lauderback

JAMES T. LYON
Mrs. Florence Lyon

M

PRUDENCE HELEN MACK
Mr. & Mrs. Charles D. Smith

JACK MADDEN
Mrs. Helen S. Roumillat

PETER MADONIA
Mrs. Anna Madonia

WILSON HOLLAND MAGEE
Miss Susie Nell Smith

FRED MAGNUSON
Mrs. Hazel L. Magnuson

GERALD T. MAHAFFEY
Richard N. Whitman

ROGER MAIN
Robert M. Dart

MAL MALVIN
Mrs. Sylvia D. Malvin

ELMER MANN
Mr. & Mrs. Frank C. Giberti

PATRICIA GAIL MANN
Mr. & Mrs. Thomas F. Lucas

ANTHONY & ANDREW MANZO
Mr. & Mrs. Harold Sundal

CARLO MARANO
Mrs. Mary Caturano

VIRGIL MARKHAM
Mrs. Virgil Markham

MAX MARKLEY
Mr. & Mrs. Alan S. Clark

ELIZA MARLIN
Mrs. Orene G. Griggs

HAROLD G. MARR
Mr. & Mrs. Walter A. Gardell

WILLIAM MARRINER
Mr. & Mrs. Stan Lewis

VERNE MARSH
Arthur A. Binswanger

HARRY G. MARSHALL
Mr. & Mrs. William W. Duthie

MRS. AGNES O'HARA MARTIN
Dale R. Martin

ALBERT MARTIN
Mrs. Albert Martin

ELIZA MARTIN
Mr. & Mrs. Howard Gates
Fiore Douglass McLean

MRS. EMMA MARTIN
Mr. & Mrs. C.J. Hayley

JESSE L. MARTIN
Mr. & Mrs. Thomas R. Murray

RAYMOND MARTIN
Mr. & Mrs. C.J. Hayley

ALBERT L. MASERICK
Mrs. Albert L. Maserick

MRS. GEORGE P. MASON, SR.
Mr. & Mrs. Charles D. Stidham

EDWARD A. MASSEY
Mrs. Johnnie M. Perkins
Miss Louise Easterling
Mrs. Edward A. Massey
Ms. Mary Lou Massey
Bradenton Chapter of
Zeta Tau Alpha Al Fraternity
Mrs. George L. King, Jr.

H. STOCKTON MASSEY, JR.
Mr. & Mrs. Clark M. Ghiselin

CHARLES H. MASTERS
Mr. & Mrs. Charles H. Masters

JAMES MATARESE, SR.
Joseph C. Matarese

OLIVER PERRY MATHIS
Mr. & Mrs. James Sabetto
F.S. Ledbetter, Jr.

PAUL A. MATSATSOS
Mrs. Annie Matsatsos

HERBERT F. MATTHEWS
Mr. & Mrs. Ped Pedrick

HOWARD MAUGER
Mrs. Hazel R. Mauger

COL. C.L. MAUSERT
Mrs. Rose A. Mausert

DR. EUGENE MAXWELL
Dr. & Mrs. Joseph C. Flynn

GERTRUDE MAXWELL
Mr. & Mrs. O.A. Maxwell

MRS. ETHEL BAKER MAYFIELD
Ms. Jewell G. Brown

J. FRANK MAYNARD, JR.
Mrs. J. Frank Maynard, Jr.

THAD MAYO
Mr. & Mrs. Virgil Q. Mayo

THOMAS GEORGE McATEER
Mr. & Mrs. William F. McATEER

JOHN A. McCABE
Mr. & Mrs. William A. Lee

REV. FRED H. McCALL
Mrs. Fred H. McCall

WILLIAM J. McCAULEY
Mrs. William J. McCauley

W.H. McCLAIN Mrs. W.H. McClain	JACK H. MERRITT Mrs. Jean F. Hodges	MYRUL G. MOREY Sheriff & Mrs. Joe Sheppard	MARTIN A. NEBUS Mrs. Emily W. Nebus	LEIF OSMUNDESEN Mr. & Mrs. Charles M. Jones, Jr.	HAROLD A. PHILLIPS Mrs. Mildred M. Phillips
MRS. ANN McCLESKEY Mr. & Mrs. Neil A. Thayer	MRS. BEVERLY METZ Mrs. Marion U. Taylor	MRS. MARY MORIN Leo A. Morin	PAUL NEED Mrs. Homer Hooks	JAMES FRANK OSTEEN, SR. Mrs. Janie B. Osteen	KAY PHILLIPS Theodore Krasutsky
BILLY J. McCLUSKEY Mrs. Patricia McCluskey	Dr. & Mrs. Joe Padgett	C.R.W. MORISON Mrs. Lynne F.M. Young	ARTHUR W. NEIL Mr. & Mrs. Elmer G. Bell	HAROLD P. OWEN Mrs. Margaret Owen	T.M. PHILLIPS Mr. & Mrs. L.H. Lumpkin
WILLARD McCREA Mr. & Mrs. James E. Cox	Dr. & Mrs. Harry Hancock	C.C. MORRIS Ms. Eva Hayhurst	ALBERT M. NEITHERCOTT, SR. Mrs. Albert M. Neithercott, Sr.	HENRY J. OWENS Sheriff & Mrs. Lanie Norvell	Mr. & Mrs. Fred J. Morrow, Jr. Mr. & Mrs. Tony Laska Mr. & Mrs. Leon Roberts Mr. & Mrs. C.P. Peters
W.O. McCULLOUGH Mr. & Mrs. Reese Revell, Jr.	MICHAEL C. MEYER Mr. & Mrs. Walter Dierks	GEORGE MORRIS Mr. & Mrs. Ralph C. Holcombe	J.W. NELSON Mrs. Lucille Arnold		CAPT. JOE PIERCE Tim Callahan
WILLIAM & MARGARET McCULLOUGH Mr. & Mrs. Leslie S. McCullough	Mr. & Mrs. John J. Williams IV	Mary, Betty, Vi and Madaline	LAWRENCE NELSON Mrs. Lawrence Nelson		WILBER & EDNA PIERCE Ms. Lois Weaver
WILLIAM E. McDANIEL Ms. Gail M. Jeffrey	ARTHUR S. MEYERSON Mrs. Arthur Meyerson	MRS. LOTTIE MORRIS David H. Morris	NORMAN L. NELSON Mrs. Norman Nelson	MRS. MAGDALINO PABROS Mrs. Agripina E. Pabros	MRS. ANN E. PIKE Miss Shelia A. Pike
DAVID E. McDERMOTT Mrs. Doris L. McDermott	JOSEPH S. MICHALEC Mrs. Josephine M. Michalec	MRS. MONA MORRIS John L. D'Oyen	LEWIS NEMETH Mr. & Mrs. William L. Carpenter	MRS. LOIS L. PACE William D. Pace	LEE K. PIKE Miss Shelia A. Pike
THOMAS W. McELVY Mrs. Thomas W. McElvy	MAJ. KAZIMIERZ MILKOWSKI Mrs. Edythe Milkowski	MRS. ROSE H. MORRISSEY James W. Morrissey	MRS. MARY W. NEUBER Mr. & Mrs. Orrie H. Simonds	PAUL C. PACE Mr. & Mrs. Herbert W. Braun	MRS. ROSEMARY RINGO PIKE Mrs. Orene G. Griggs
SHERIFF & MRS. F.L. McGEHEE Mr. & Mrs. Samuel B. Love, Jr.	F. NEWMAN MILLER Mrs. F. Newman Miller	FLOYD N. MORTENSON Mrs. Helen L. Mortenson	MRS. MENA NIBLACK Mrs. O.E. Herndon	ALBERT A. PACHINGER Mrs. Helen G. Pachinger	JAMES PILKINGTON Mr. & Mrs. Arthur H. Pilkington
BRUCE CYRUS McGLASSON Mr. & Mrs. Howard McGlasson	HOWARD MILLER Mr. & Mrs. Charles B. Anderson, Jr.	MOTHER OF DR. DAVE PROPPERT Dr. Edward G. Haskell, Jr.	MRS. MINNIE OLA NICHOLAS Mr. & Mrs. Frank Clark	MRS. MADELINE PAINE Wentworth R. Paine	FLORENCIO PILOTO Mrs. Leonor Piloto
CHARLOTTE McGLOIN Ms. Mary V. Newbold	JIMMIE MILLER Mr. & Mrs. Lafe W. Culley	WILLARD MOWBRAY Mrs. Willard Mowbray	BEN NICHOLS Mrs. Dwight W. Lambe	RICHARD MORRIS PAINTER W.W. Duncan	ARCHIE M. PINE Mrs. Margaret Pine
Ms. Cora N. Moore	KATHERYN MILLER Mrs. Leona Bove	FRANK J. MRAMOR Mrs. Frank Mramor	GORDON C. NICHOLS Mrs. Gordon C. Nichols	JOSEPH M. PALMA Mrs. Louise Palma	JAMES PIPER Mrs. Earnest Holeman
HAROLD E. McGRATH Mrs. Zella W. McGrath	LISA J. MILLER Mrs. Margaret E. Roberts	MARGARET MUEHLNER Mr. & Mrs. Thomas L. Zane	LAURA NICHOLS Mr. & Mrs. Buck McIntyre	BERNARD MICHAEL PALMER Bernard L. Palmer	JOHN R. PITMAN Mr. & Mrs. Sim L. Lowman, Sr.
JOHN J. McGUINNESS Mr. & Mrs. John J. Reilly	COL. WILLIAM G. MILLER Mrs. Ruth A. Anderson	AUGUST & ANNA MUELLER Mrs. Charlotte Urban	MARGARET NICKERSON Ret. Officers Wives Club of Key West	CARL W. PALMER Mrs. Doris H. Palmer	MRS. EMMA PITTILLO Mr. & Mrs. Chris Sorenson
MRS. HELENE McKAY L. Landreth McKay	Albert Cappelli	MARILYN LEE MUFF Mr. & Mrs. Thomas Muff	ROBERT G. NIEMEYER Mrs. Martha Johann	MRS. DOROTHY W. PALMER Nelson C. Palmer	ARTHUR PLATT Mr. & Mrs. Paul H. McDaniel
K.I. McKAY, JR. Mr. & Mrs. Seymour C. Mickler	Mr. & Mrs. Arthur B. Fogarty	LOUIS MULLER Dade City Chapter 395 N.A.R.F.E.	FREDERICK W. NIXON Mrs. Frederick W. Nixon	HENRIETTA PALMER Mr. & Mrs. Leonard R. Sparks	Mrs. Theodore Stout Mr. & Mrs. Paul H. McDaniel
HARRY McKILLIPS Ms. Helen McNeil	Mr. & Mrs. Terry Vorhees	KERMIT R. MULLINS Mrs. Pansy B. Mullins	H.L. NOBLITT Mrs. Ora C. Noblitt	MRS. WHIT PALMER, SR. John W. Booth	NEVILLE N. PLUNK Mr. & Mrs. Harmon M. Roberts Sr.
CECIL WAYNE McLAUGHLIN, SR. Mr. & Mrs. Dan L. Autrey, Jr.	Edward A. Smith	RICHARD WILLIAM MUNCH Charles E. Munch	SYLVAN G. NORDBERG Mr. & Mrs. C.W. Jones	MARTHA PANUSKA Mr. & Mrs. Ernest J. Warro	CURT POEN Mrs. Ida Poen
Mr. & Mrs. Ruth H. Littlefield	Mr. & Mrs. Frank Lees	MRS. GLADYS MUNGER Mr. & Mrs. John R. Goodwin	GEORGE NORDSTROM, III George H. Nordstrom	EUGNE J. PARENTEAU Mr. & Mrs. Donat Parenteau	JOHN POHNEY Mr. & Mrs. William R. Hauke
Mr. & Mrs. Carl Spence	Mr. & Mrs. William Scanlan	Mr. & Mrs. Chris G. Christensen	G.W. CRACKER NORTH Sheriff & Mrs. Joe Sheppard	WALTER R. PARKE Mr. & Mrs. Clyde W. Courter	WAYNE POLLIO Mr. & Mrs. George H. Leddy
Mr. & Mrs. E.L. Hunt	LTC & Mrs. John J. Rimes, Jr.	DORIS MUNRO Mrs. L.P. Dixon	GUY C. NORTHROP Mrs. Guy C. Northrop	NICK PARLATORE Mrs. Josephine Parlatore	ANNA POMEROY Mrs. Alma A. Munroe
Mrs. Robert M. Buckels	Ernest O. Rotramel, Jr.	ANTHONY MUNROE Mrs. Alma A. Munroe	L.E. NOTT Mrs. Betty M. Nott	MRS. JUNE PATTERSON Lee Patterson	GREG PONLIN Mrs. Alice Blatz
Mr. & Mrs. Earlo Tanner	Mr. & Mrs. W.F. Cobler	Mr. & Mrs. F.S. Shaw, Sr.		MRS. CORABEL PATTON Mrs. Gladys Welch Bruce	HENRY EUSTON POOLE Mrs. Henry E. Poole
Mr. & Mrs. James Sabetto	Mrs. A. Lois Callaghan	Mr. & Mrs. George Jones		HARRY PEELER Mr. & Mrs. Radcliffe Morrill	STANLEY POOLE Mrs. James N. Maples
Ms. Pansy N. Lingle	Betty J. Reese	Dale Jones		J.H. PELOT Mrs. Oleta Powers	Julian V. Smith
Mr. & Mrs. Carl M. Schmidt	Ms. Sandra A. Vecchio	HARVEY V. MURPHY Mr. & Mrs. Sheldon Grow		CHRIS F. PENNER Mrs. Chris F. Penner	CDR. RALPH L. PORTER Mr. & Mrs. Arnold C. Wass
MERWYN J. McLEMORE Mrs. Rhesa G. Igo	Mr. & Mrs. Phil Bauscharo	ROY HUNTER Lura M. Ware		PAUL PERGAMO Mr. & Mrs. Glenn M. Tracy	DONALD PATRICK POWELL Mr. & Mrs. Donald E. Powell
DELLA SWEAT McLEOD Mr. & Mrs. Claude Tanner	Mr. & Mrs. Nicolai Pusemp	EDITH A. DANIELS Isabel Paul		LOUIS PERINE Ms. Thelma B. Graham	KARL M. POYCK Mrs. Dorothy J. Poyck
WILLIAM McMASTER Mrs. Marjorie Holmquist	Mr. & Mrs. Charles G. Graham	Mr. & Mrs. Harry E. Phoenix		MR. & MRS. JOEL PERKINSON, SR. John A. Perkinson	ARNOLD PRESLICKA Ms. Adrienne Satchell
ARCHIBALD L. McMILLAN Mrs. Lelia B. McMillan	Dep. & Mrs. Lowell W. Stevem	W. Porter Sargent		THOMAS O. PERKINSON Thomas O. Perkinson	WALTER PREVATT Ms. Veronica K. Castleane
HAROLD McNABB Henry Hilton-Green, Jr.	W.O. JOHN J. MILLER, JR. Mr. & Mrs. Jerome J. Miller, Jr.	Mrs. Harvey V. Murphy		MRS. EVA H. PERRY Mr. & Mrs. Bartlett Johnson	JAMES H. PRICE Mrs. Dorothy W. Price
EDWIN L. McNAMARA Mrs. Margaret M. McNamara	LT. MICKY MILLIS Mr. & Mrs. Russell Millis	Mr. & Mrs. A. Brown		GEORGE PERRY Lawrence Perry	Dr. & Mrs. Donald Reynolds
MRS. LOUISE PROCTOR McNEILL Mr. & Mrs. Lafe W. Culley	BARTLETT R. MILLS Mr. & Mrs. Edward Frank	Mr. & Mrs. W.R. Watrous		TRUMAN D. PERRY Mrs. Barbara McCall & Sean	JOHN M. PRICE Mrs. Helen J. Selle
Ms. Alma A. Munroe	Mr. & Mrs. Joseph Hayes	ROBERT MURPHY Lawrence S. Rehman		OPIE H. PERSINGER Mr. & Mrs. Earl Talbot	MRS. JOSIE O. PRICE Mrs. Mila Dean Mahr
MALCOLM McPHAIL Mrs. Bee McPhail	Joseph V. Meyer	T. MURPHY Mrs. Margaret Purdy Murphy		DANIEL D. PESCHIO, JR. Dr. & Mrs. Daniel Peschio	DOYLE PRIEST Mr. & Mrs. Arland McCall & Heather
LESTER MCPHEETERS Ms. Jane S. Beckham	Mr. & Mrs. John Belo	G.M. MURRAY Mr. & Mrs. J.W. Adams		HELEN PETERS Mr. & Mrs. Anthony J. Dell	SAM PRINGLE A.P. Bell Fish Co., Inc.
Mrs. Lester McPheeters	James Smith	BRIG. GEN. L.V. MURROW Mrs. L.V. Murrow		JOSEPH R. PETERSEN Mr. & Mrs. Joseph F. Cseh and Daughter	JOSEPH H. PRINZ Wyman Coarsey
MRS. ROBERT D. MCPHERSON Robert D. McPherson	Mr. & Mrs. Alan B. Peterson	MRS. BESSIE SMITH MYERS James W. Myers		GARY O. PETREE Mr. & Mrs. S.W. Petree	Mr. & Mrs. J. Earl Steinhauer
H.M. McSURLLEY Mrs. H.M. McSurlley	T.E. MINGLEDOERFF, JR. Walter V. Culley, Sr.	JAMES MYRMEL Mr. & Mrs. W.B. Sterling		STEVE F. PETREE Mrs. Cora Mae Petree	SILVANA PRINZIVALLI Frank Prinzivalli
CARL McVEIGH Mr. & Mrs. Edwin B. Bassett	MRS. MISKOWIEC Mr. & Mrs. John Breejen	ROBERT MURPHY Lawrence S. Rehman		SIDNEY PETRIE Mr. & Mrs. Morris Monoson	J.W. PRIOR Mrs. Clara Ann Prior
B.J. MEADOWS Miss Hazel McAteer	GEORGE MITCHELL Mr. & Mrs. Russell L. Allabaugh	ROBERT MURPHY Lawrence S. Rehman		FRED PEYERL Mrs. Emmy Peyerl	WALTER PRIOR Lt. Col. E. Lynne Christy
EDNA H. MEDDOCUFF Mrs. Garnett M. Chezam	RONALD F. MOCH Miss Victoria M. Moch	T. MURPHY Mrs. Margaret Purdy Murphy		MRS. GEORGIA M. PHILLEY Charles H. Philley	WILFRED F. PRITCHETT Mr. & Mrs. Harold F. Collins, Jr.
JACK MEEK Mr. & Mrs. Lawrence E. Steltzner	Miss Charlotte U. Moch	G.M. MURRAY Mr. & Mrs. J.W. Adams			MRS. SALLY PROBST Albert A. Probst
REV. RAYMOND MEINERS Mr. & Mrs. James Baird, Jr.	FRANK D. MOCK Mr. & Mrs. Cliff L. Murdock	BRIG. GEN. L.V. MURROW Mrs. L.V. Murrow			MRS. YVONNE PROTEAU Placide Proteau
ELLEN DESTIN MELVIN Mr. & Mrs. Woodard H. Lackey	MRS. SUK L. MODERAU Robert Moderau	MRS. BESSIE SMITH MYERS James W. Myers			
DR. C. LOUIS MENDEL Mrs. C. Louis Mendel	CHARLES F. MOEHLE, SR. Mrs. Gertrude K. Moehle	JAMES MYRMEL Mr. & Mrs. W.B. Sterling			
ALFRED F. MERCIER Mrs. Christine Mercier	MRS. CLAIRE MOLDOVAN Mr. & Mrs. Donald S. Genung	ROBERT MURPHY Lawrence S. Rehman			
CAPT. DICK MERRILL Mr. & Mrs. James Matthews	STANLEY MOODY Mr. & Mrs. Samuel B. Love, Jr.	T. MURPHY Mrs. Margaret Purdy Murphy			

DONALD F. PRYOR
Mrs. Anna P. Pryor
MRS. OMI PURVIS
C.A. Sweat, Jr.
Essie Sweat
Mrs. Russell Carter

Q

JOHN T. QUINN
Mrs. Eleanora K. Quinn

R

ANDREW & WALTER RABBITT
Mrs. Andrew J. Rabbitt
SAM W. RACHELS
Mrs. John Dorsey
JAKE RACHIEFF
Barton Goodwin
RALPH A. RAE, SR.
Mrs. Beatrice Rae
Mrs. Alice M. Rogers
CHARLES J. RAFFLES
Mr. & Mrs. Harry B. Depriest
IDA P. RALSTON
Ralph E. Ralston
MRS. LOUISE H. RAMBO
Mr. & Mrs. Victor B. Yeats
Mr. & Mrs. Herbert E.
Harley, Jr.
Mr. & Mrs. Ed Blackburn, Jr.
RANSON W. RANDALL
Mr. & Mrs. Arthur J. Brodrick
EDWIN RANKIN
Mrs. Edwin G. Rankin
CARL R. RASCHKE
Mr. & Mrs. Ted Koby
Ms. Helen A. Dautrich
Mr. & Mrs. Hugo Foth
JOSEPH P. RAUSEO
Mrs. Agnes M. Rauseo
MRS. JACK RAVENS CROFT
Mr. & Mrs. Donald C.
McMullen
CLARENCE B. RAWSON
Mrs. Alma E. Rawson
RICHARD J. RAWSON
Mrs. Lois Colton
JOSEPH G. REARDON
John P. Reardon
JEROME RECTOR
Mr. & Mrs. A.G. Stefurak
JOHN S. REDMERSKI
Miss Elizabeth B. Ransom
BEULAH CLAIRE REDNER
Orris D. Redner
ARTHUR L. REESE
Mrs. Arthur L. Reese
JOAN IRENE REESE
Mrs. Irene Hill Reese
BETTY REEVES
James J. Reeves
LESLIE H. REEVES
Mr. & Mrs. Clinton Reeves
EDWARD H. REID
Mr. & Mrs. A.G. Stefurak
L.E. REIFSCHEIDER
Mrs. Alma Reifschneider
LINDA D. REINHART
Mr. & Mrs. Leonard J.
Reinhart
JOHN J. REMER
Mrs. Semora W. Remer
CHANNING BRUCE RENNIE
Mr. & Mrs. J. Earl Steinhauer
CEDRIC A. RICHARDS
Mrs. Catherine E. Schweitzer
Mr. & Mrs. Louis W. Lantman
MRS. ELIZABETH G.
RICHARDSON
Mrs. Clarissa G. Osborne
L.M. RICHARDSON
Mrs. Wilma Richardson
MILDRED RICHTER
Mrs. Eugene W. Garrison
EUGENE A. RICKABY
Mrs. Eugene A. Rickaby
HAROLD RIDGELY
Mr. & Mrs. R. Stuart Weeks
EDWIN O. RIEDEMAN
Mrs. Corinne B. Riedeman

MRS. ROSE F. RIGELL
W.F. Rigell
MARSHALL C. RIGGS
Mrs. Rosalie Riggs
BILL RINEHART
Mrs. Alice Louise
Lungerhausen
EDWARD J. RISDEN
Mr. & Mrs. William A.
Crowle, Jr.
FLOYD RITCHEY
Mrs. Floyd Ritchey
MARTY ROBBINS
Mrs. Rose Bronson Eleyse
MRS. JEWELL ROBERTS
Summer R. Lowe
MRS. RUTH ROBERTS
Mrs. Margaret C. Meng
JAMES H. ROBERTS, JR.
Walter V. Culley, Sr.
BROWNETTE ROBERTSON
Brownie L. Robertson
DR. H.A. ROBINSON
Mrs. Harold Robinson
J.R. ROBINSON
Mrs. Sara R. Johnson
ROSCOE D. ROBINSON
Mrs. Joy K. Roberson
JOHN & EMMA ROGERS
Mr. & Mrs. Floyd M.
Falkenberg
LAWRENCE W. ROGERS
Marian I. O'Reilly Trust
OSCAR F. ROGERS
Mrs. Alwilda B. Rogers
PERRY ROGERS
Mr. & Mrs. Robert W. Grafe
JOSEPH P. RONAN
Malcolm R. Pratt
HOLLIS H. ROOT
Mrs. Hollis H. Root
FERRANDINO ROSA
Mr. & Mrs. Louis Ferrandino
MARTY ROSEFELT
Mr. & Mrs. Philip Rosefelt
WILLIAM RUSSELL
ROSENBERGER
Mrs. Rudolf G. Petsche
ALBERT C. ROSS
Mrs. Helen M. Ross
MRS. BERTHA ROSS
Mrs. Lois B. Campbell
LEON ROTHENBERG
Mrs. Leon Rothenberg
EDWARD ROTHSCCHILD
Mrs. Mildred Hayes
ELLEN MARY ROTUNDA
Mr. & Mrs. Thomas J. Rotunda
LAWRENCE J. ROUSSEAU
Mrs. Sylvia S. Vanselow
WIN A. ROWAN
Mr. & Mrs. Marion H. Riley
ROBERT L. ROYAL, SR.
George W. Royal
CHARLES RUEHL
Mrs. Charles W. Ruehl
MRS. ALICE F. RUFF
Dr. & Mrs. Sherman H. Pace
TONY & IGNAZIA RUMASUGLIA
Joseph Rumasuglia
JOEY RUMFOLA
Mr. & Mrs. Carl T. Henry
MRS. AMBER RUSS
Mrs. Jean M. Hamrick
MRS. CHARLOTTE L. RUSSELL
Mr. & Mrs. Joseph F. Cseh
WILLIAM RUXTON
Mrs. Agnes Ruxton
MILTON J. RUZICKA
Mrs. Helen M. Ruzicka
G.S. RYAN
Mr. & Mrs. Leonard Morgan
MRS. MARION RYAN
Mrs. V.J. Walters

S

MRS. BETTY SAAR
George A. Saar
JOSEPH & BARBARA SAFFA
Mr. & Mrs. Joseph M. Saffa
LILLIAN SAFFA
Mr. & Mrs. Joseph M. Saffa

CHANSING M. SALLY
Mrs. Henrietta E. Sally
JEFFREY SALZER
Mrs. Hattie Salzer
SAMMY
W.F. Tudor
MRS. LOUISE SAMPLES
Mr. & Mrs. Charles M.
Robinson
Mr. & Mrs. K.G. Robinson
Mr. & Mrs. Walter B. Krysher
MRS. BASIL SAMPSON
Basil Sampson
FRED C. SANBORN
Mr. & Mrs. Robert H. Sanborn
Mrs. Helen G. Sanborn
Charlotte Sanborn
EDWARD SANDERSON
Mrs. Edward Sanderson
LUCY C. SANFORD
Mr. & Mrs. H.M. Coachman
N.E. SANTAMOUR
Mrs. Ethel H. Santamour
ANTHONY SANTIAGO
Mrs. Mary Santiago
RALPH SANTORE, SR.
St. Johns Park
V.F.D. Firefighters
JACK SAPP
Mrs. J.A. Sapp
PETER G. SARRES
Mrs. Mary A. Sarres
LT. JOHN SASSE
Mrs. John Sasse
HARRY C. SAUER
Mrs. Clara R. Dowson
IDA PROC SAULS
Clemons Heating & A/C
Employees
MRS. MATTIE LUCILLE
SAUNDERS
Ms. Sandy Woolley
Mr. & Mrs. Michael Robbins
Mr. & Mrs. H. Hollidge
Mr. & Mrs. Donald S. Genung
Mr. & Mrs. R.L. Carr
S.M. SAUNDERS
Mr. & Mrs. R.L. Carr
IRMA SAVILLE
Mrs. Margaret Beyer
W. FRANK SAXON
Mrs. W. Frank Saxon
MILFORD SCHACHOLT
Mr. & Mrs. Gerald L. Dawley
MYRTIE SCHAFFER
Mrs. Katharyn M. Thompson
CHARLES SCHAFFNER
Mrs. Lorraine Schaffner
MRS. ERMA SCHAILL
Mr. & Mrs. John J. Enzor
MRS. MARIE J. SCHERER
Albert Hughes
Mr. & Mrs. Victor A. Miller
Ms. Kay F. Kennedy
ALFRED H. SCHIEFERSTEIN
Mrs. Lillian B. Schieferstein
DR. JOHN Z. SCHMIDT
Mr. & Mrs. James Sabetto
Mr. & Mrs. Clyde Story
Dirk Story
Mrs. Lucille B. Schmidt
RICHARD A. SCHMIDT
Mr. & Mrs. Roy A. Schmidt
HAROLD SCHOLLIAN
Mrs. Doris Watson
MRS. RUTH SCHOMBERG
Mrs. Robert F. Goddard
KAY SCHONECK
Mr. & Mrs. William R.
Schoneck
WILBUR C. SCHRADER
Mr. & Mrs. William R.
Baker
DAVID SCHRAIER
Mrs. Alice Schraier
PAUL RICHARD SCHUCK, SR.
The Grissoms
Mrs. Ruth H. Littlefield
ANNE SCHUELER
Mr. & Mrs. Howard E. Ball
SAM & ANN SCHWARTZ
Mr. & Mrs. Howard H. Schmidt
REO L. SCHWEICKHARDT
Mr. & Mrs. Fred H.
Schweickhardt

VERO LIBERO SCIPIONE
Mrs. Leonard Morelli
ELISE SCOFIELD
Mr. & Mrs. Ebbert Castel
EARL G. SCOTT
Mrs. Sadie Scott
F. LAWRENCE SCRIBNER
Mr. & Mrs. William S. Wilcox
C. WIGHTMAN SEABOLD
Mrs. Ruth W. Seabold
LEE WHITMARSH SEABROOK
Mrs. Jean M. Hamrick
EARL M. SEAGRAVE
Mrs. Earl Seagrave
E.T. SEAMAN
Mrs. Flora E. Seaman
MARGERY R. SEAMAN
Mrs. Nellie R. Hackett
STANLEY G. SEARLE, JR.
Mrs. Lois E. Searle
JOE SEDMERA
Mr. & Mrs. Don Howell
& David
CHRIS SEIDENSPINNER
Mrs. Ruth Seidenspinner
DOLLIE HOFMANN SELBY
Mrs. Nellie L. Schmieder
JOSEPH SELVAGGI
Capt. & Mrs. Albert Selvaggi
CHARLES SERAZIO
Mrs. Lena Serazio
MR. & MRS. CLEMENT SERINO
Mr. & Mrs. Nicholas Serino
WILLIAM J. SHARPE
Mr. & Mrs. Ben M.
Southard, Jr.
PHIL SHAW, SR.
Mrs. Phil Shaw, Sr.
HAYWOOD SHEARD, SR.
Mr. & Mrs. Samuel Whitley
MRS. BERTHA SHEEHAN
Mr. & Mrs. Philip J. Koenig
JUDY ANN SHEETS
Mr. & Mrs. J. Bradley Sheets
VIRGINIA SHENBACK
Mrs. Bernard Carier
MRS. EVELYN SHEON
Jesse P. Sheon
C.C. SHEPARD
Mr. & Mrs. John Miles
G.O. SHEPHERD
Mrs. Emie L. Peoples
THOMAS A. SHEPPARD
Mrs. Thomas A. Sheppard
GUY W. SHEROUSE, SR.
Sheriff & Mrs. Lucian J.
Hindery
ELMER SHERWOOD
Mrs. Lucille Sherwood
JOHN SHEVLIN
Mrs. Elizabeth Murrell
MRS. RUTH SHINABERY
Mrs. Maude V. Powell
Miss Martha A. Lauderback
LESTER SHIRK
Miss Naomi A. Kash
CHARLES & MARGARET
SHORTS
Mrs. Genevieve K. Hiebel
FRANK SHUGERT
Mrs. Frank Shugert
MASON E. SIGMUND
Mrs. Marie C. Sigmund
ALMA SIKES
Mr. & Mrs. Roy C. Gause
MRS. ANNIE F. SIKES
LTC & Mrs. James I. Sikes
CHARLES H. SILER
Mrs. Virginia B. Siler
ALVIN SIMMONS
Henry C. Graham
CLARK H. SIMMONS
Mrs. Clyde Simmons
FRANK & BILL SIMMONS
Mrs. Chlotilde S. White
RICHARD F. SIMMONS
Mrs. Mary F. Simmons
MARY SIMONE
Salvatore Simone
CELIA & PHILIP SIMONS
Mr. & Mrs. Joseph Simons
HARRY W. SIMPSON
Mrs. Harry W. Simpson

LAWTON SIMS
Sheriff & Mrs. Don Moreland
WERNER SINGER
Mrs. Hilda C. Singer
CHARLES SIVRET
Mrs. Isabella Sivret
JO ANN SKOLAK
Mr. & Mrs. Martin Novosel
LOUISE SLASMAN
Mrs. Leonard F. Olt
MRS. JOYCE N. SLAYTON
SGT. Maj. Roger H. Slayton
SARAH SMALL
Dr. P. Leo Crespi
HOMER SMART
Mr. & Mrs. Alan S. Clark
MRS. AGNES SMITH
Capt. Leonard C. Smith
BERTHA L. SMITH
Miss Clara A. Georges
MRS. BLANCHE CAROL SMITH
CDM William Siets Sr.
BRUCE L. SMITH
Mr. & Mrs. A. Joe Ivie
COLEMAN J. SMITH
Mrs. Coleman J. Smith
DORMER SMITH
Mr. & Mrs. W.L. Bunce
FRED SMITH
Mr. & Mrs. Robert A.
Letchworth
Mr. & Mrs. Edward C.
Anderson
FRED C. SMITH
Mr. & Mrs. Ralph W. Allemeier
JAMES C. SMITH
Mrs. Stewart C. Smith
JAMES ROY SMITH
Mrs. Elsie Smith
JOSEPH D. SMITH
Mrs. Marjorie Smith
JOYCE A. SMITH
Edgar A. Park
MRS. KATHRYN J. SMITH
H. Sidney Smith
CAPT. KERFOOT B. SMITH
Mrs. Kerfoot B. Smith
MICHAEL A. SMITH
Mr. & Mrs. Jack H. Whiticar
NELSON E. SMITH
Mrs. Nelson E. Smith
S.W. SMITH
Mrs. Vera Smith
T.D. SMITH
Mr. & Mrs. Earlo Tanner
Mrs. Vera Keene
YANCY SMITH
Mrs. Betty Snell
JAMES G. SMITH, SR.
Mrs. Heber B. Osborne, Sr.
ALFRED SNELGROVE
Waters Edge Condominium
Bldg. 1100
Newfoundland Society
of Florida
Mrs. Alfred K. Snelgrove
Vivian Spiroff
BOBBY SNIPES
Mr. & Mrs. David M. Laffitte
CAPT. BLACKIE SNOW
Miss Polly Andem
Mr. & Mrs. Alan Phillips
RICHARD SOELLNER
Mrs. Eleanora M. Soellner
DAVID D. SOLLENBERGER
Mr. & Mrs. Lester D.
Sollenberger
CLIFFORD L. SOLLINGER
Mrs. Anna E. Sollinger
LESTER SOLOMON
Mrs. Irene C. Solomon
JOE SOPOTNICK
Mrs. Anne S. Gautier
VINCENTA SOSA
Mr. & Mrs. Peter Sosa
BILL SPENCER
Mr. & Mrs. Alton L. Dreayer
W.C. SPENCER
William C. Spencer, Jr.
JOHN SPOTTSWOOD
Robert R. Nathan
MONTELLE H. SPRINGSTEAD
Dr. & Mrs. C.W. Springstead

STETSON O. SPROUL
Mrs. Lillian E. Sproul
W. DICK STAMBAUGH, JR.
Mr. & Mrs. Homer G. Russell
GEORGE H. STANLEY
Edwin H. Stiteler, Jr.
RUSSELL G. STARK
Mrs. Florence E. Stark
CHARLES STARLING
Mr. & Mrs. Harvey Collins
WILLIAM DRUE STAYER
Mr. & Mrs. Carl A. Stayer
GEORGE G. STEFFEE
Mr. & Mrs. Carl Spence
Mr. & Mrs. Earlo Tanner
Mr. & Mrs. Robert B. Knox
WILLIAM H. STEMPER
Miss Rose Levy
MRS. DELIGHT STEPHENS
Ms. Jane S. Beckham
LESTER WILSON STEPHENS
Mr. & Mrs. James W. Barker
MADELINE F. STEPHENS
James R. Stephens
W.D. STEPHENS
Mrs. H.M. Shirley
COL. PHILIP STERIDAN
Mr. & Mrs. Ralph S.
Pendexter, Jr.
WILLIAM & SARAH STERN
Mr. & Mrs. Norman L. Stern
JAY WILLARD STERNER
Mrs. Muriel G. Sterner
MILTON W. STEVENS
Mrs. Eva J. Stevens
Mrs. Nellie Worden
JOE R. STEWART
Mrs. Joe R. Stewart
MRS. TEMPE STEWART
Percy L. Richardson
MALCOLM R. STIRTON
Mr. & Mrs. Wilbur K. Olson
DICK STOCKHAM
Clifton Oliver, Jr.
KENNY STONE
Mr. & Mrs. Carl Stone
WALTER J. STONE
Mrs. William A. Scheig
MINNY B. STONEHILL
F.D. Stonehill
AUSTIN D. STONER
Ms. Janet S. Norris
ERNEST STONER
Mrs. Ann Stoner
J.B. STORY
Mrs. Lillie B. Story
ANTHONY STOTZ
Mr. & Mrs. Martin Novosel
THEODORE B. STOKUT
Mrs. Theodore Stout
Mr. & Mrs. Paul H. McDaniel
MRS. ANN STRATTON
Mrs. Marjorie Edmunds
WILLARD LESLIE STRAWN, SR.
CDM William Siets, Sr.
NORWOOD R. STRAYHORN
E. Bruce Strayhorn
RICHARD STREETER
Mr. & Mrs. Frederick L. Pahler
NEVA K. & JOHN L. STRIEGEL
Karl Striegel
MRS. MARGARET STRONG
Howard W. Bennet
IRVING STUMPF
Mrs. Earnest Holeman
MAYNARD M. SULLIVAN
Mr. & Mrs. Earlo Tanner
HARRY SUMMERS
Mr. & Mrs. H.L. Crutchfield
MRS. ANGUS SUMNER
Mrs. Marjorie O'Quinn
FRANCES SUNDBROM
Manatee County Sheriff's
Dept. Employees
RAMON SWART
Mrs. Ramon Swart
NED SWEAT
Mr. & Mrs. Johnny M.
Halley, Jr.
MR. & MRS. J.W. SWISHER
Mrs. Margaret L. Campbell

T

FRED TAG
Mrs. J.W. Frazer

K.G. TALKINGTON
Mrs. K.G. Talkington

MRS. LAURA M. TALLEY
Albert D. Talley

DR. JOHN A. TASCHÉ
Mrs. Myra H. Tasche

MRS. ALMA T. CARR TATE
Mr. & Mrs. Herbert W. Braun

GEORGE T. TAVENNER
Mrs. George T. Tavenner

C.A. TAYLOR
Miss Susie Nell Smith

MRS. ETHEL FULTZ TAYLOR
Mrs. Lela H. Olmstead

F. LAWSON TAYLOR
Mrs. Marjorie O'Quinn

J.W. TAYLOR
Mrs. J.W. Taylor

JOHN E. & NINA TAYLOR
Mr. & Mrs. John E. Taylor

RALPH N. TAYLOR
Mrs. Nellie B. Taylor

ELIZABETH TEMPLETON
Mr. & Mrs. Walter Benz

PERCY & ELIZABETH TEMPLETON
Mrs. Margaret E. Gibbard
Mr. & Mrs. Richard L. Jones
Mr. & Mrs. Ralph H. Fawcett
Mrs. Josephine Leverso
Mrs. Catherine Taheny
Mrs. Marie T. Wescott
Arthur D. Templeton
Mrs. Dorothy M. Sanderson
Mrs. Charlotte Urban

W.J. TENCH
Dr. & Mrs. William R. Tench

OLAV R. TERGESEN
Mrs. Olav R. Tergesen

MRS. AGNES TEW
Harry R. Tew

RUSSELL A. TEWKSBURY
Mrs. Russell A. Tewksbury

MORRIS THAL
Mrs. J.W. Frazer

MRS. ELOUISE THAXTON
Mrs. V.J. Walters
Sheriff & Mrs. Lanie Norvell
Mr. & Mrs. Carl Carlton, Sr.
Mrs. Vera Bates
Mr. & Mrs. Dan S. Carlton

LAWRENCE W. THILMONY
Mrs. Olivena Thilmony

MRS. MAYME THISTLETHWAITE
Mr. & Mrs. Hugh Donald Loucks

BERT L. THOMAS
Mr. & Mrs. Clarence E. Thomas

HAROLD T. THOMAS
Mr. & Mrs. Ronald A. Williams

SALLY KAY THOMAS
Mrs. Hiram H. Raulerson

SENATOR JERRY THOMAS
Mrs. Jeannie Thomas

GEORGE W. THOMPSON
Mrs. George W. Thompson

MRS. MINNIE L. THOMPSON
Mr. & Mrs. Don Howell & David

W.D. & ERNA B. THOMPSON
Mr. & Mrs. Leslie S. McCullough

EDWARD N. THORNTON, JR.
Mrs. Edward N. Thornton, Jr.

MR. & MRS. GEORGE F. THROOP
Mr. & Mrs. Ray A. Throop

JOHN TIETJEN
Edwin G. McCormick

B.G. TIMMONS
Mrs. Valda E. Timmons

CAL J. TINDALE
Mr. & Mrs. J.D. Ryals

MRS. ESTHER D. TIONGCO
Mariano T. Tiongco

L.E. TIPPETTS
Mrs. Netha M. Tippetts

A. RICHARD TODD
Mrs. A. Richard Todd

JIM TOMLINSON
Mr. & Mrs. P.K. Rowell
Mr. & Mrs. Gordon R. Henderson
Mrs. Mary L. Nordmann
Friendship United
Methodist Church
Mr. & Mrs. Calvin M. Horne

ALFRED J. TONDREAU
Mrs. Alfred Tondreau

GILES C. TOOLE, SR.
Ms. Gayle Swedmark
Mrs. D. Fred McMullen
Ray E. Green, Jr.
Mr. & Mrs. Wilfred C. Varn
Julian V. Smith

GEORGE TOUCHSTONE
Mrs. George Touchstone

ERNEST J. TOWNSEND
Mr. & Mrs. Edward A. Clouse

DR. PAUL H. TRACY
Mrs. Rosamond M. Tracy

MRS. RALPH J. TRADER, JR.
Ralph J. Trader, Jr.

MRS. DELMAR R. TRAVER
Mr. & Mrs. Ronald N. Potter

GALEN TREADGOLD
Mrs. Aksel G. Olsen
Port Belleair No. 4, Inc.
Mrs. Evelyn G. King

MRS. EMMA TREVILLIAN
Mrs. Gail T. Norman

MRS. RUTH TROTTER
I.E. Trotter

WAYNE TRUDEL
Mr. & Mrs. George Crane

MRS. KATHRYN TRUEEMAN
Mr. & Mrs. Edward J. Helgenberg

FREMONT TRUMAN
Mr. & Mrs. George W. Truman

JOHN H. TULL
Mrs. Antoinette T. Buhr

CAPT. MARK C. TUNIS
Mr. & Mrs. Charles Ivan Munroe, Jr.

SAMUEL B. TURMAN
Mr. & Mrs. Earlo Tanner

T. BRYANT TURNER
Mrs. Frieda Turner
Joseph B. Railey

WILBUR H. TURNER
Mrs. Lillian Sefton

CARLETON TWEED
Mrs. Suzanne Tweed

ED TYE
Mr. & Mrs. Albert A. O'Kelley, Jr.

U

MRS. CLARA R. ULBRIK
Eugene S. Ulbrik

FRANK URBAN
Mrs. Charlotte Urban

MRS. MARGARET UTTAL
Harry Uttal

V

NELSON VALENTI
Mr. & Mrs. Ed Blackburn, Jr.

JAMES O. VAN AMBER
Mrs. Genevieve Van Amber

MRS. MARY H. VAN HORN
Mr. & Mrs. Harold E. Fowler

DONALD VAN KAMPEN
Mr. & Mrs. Albert B. Hoehne

LILLIAN VAN OOSTROM
Frank Van Oostrom

H.R. VAN SICKLE
Mrs. Ruth E. Van Sickle

MRS. ELIZABETH A. VAN VIERSEN
Johannes A. Van Viersen

VICTOR VANCE
Mr. & Mrs. H.L. Crutchfield

MISS ENID B. VAUGHN
Mr. & Mrs. Herman U. Krebsner

NORMAN H. VAUSE, JR.
Mrs. Harry Taylor

MRS. CASSIE VAZ
George Vaz

DR. WALTER L. & EMMA ALICE VERCOE
Lawrence R. & Margaret Vercoe Becker

ETHEL VERONA
Louis R. Verona

MRS. NICK VITALE
Mr. & Mrs. James Pergola

WILLIAM VOGEL
Mrs. Mary Vogel

MARCELLUS G. VOGT
Mrs. Ruth C. Vogt

BERNARD H. VOLLRATH
Mrs. Bernard H. Vollrath

NICK VOSCINAR
Mr. & Mrs. Stanley Chorvat

W

JOHN G. WAGNER
Mrs. John G. Wagner

RAYMOND W. WAITS
Mr. & Mrs. Virgil Light Townsend

MRS. ANNA BERTIE WALKER
Mrs. George Louden
Mrs. Myrtle B. Hunt

FRANK N. WALKER
Mrs. Frank N. Walker

GEORGE WALKER
Mr. & Mrs. E. Russell Moore

GO GO WALKER
Mr. & Mrs. Donald D. Walker

HELEN THOMAS WALKER
Theodore G. Walker

JOSEPH M. WALKER
Mr. & Mrs. W.L. Cook

YVETTE WALKER
Mr. & Mrs. E. Russell Moore

LEW WALLACE
Mr. & Mrs. A. Richard Kessler

EDWARD M. WALLER
Maj. & Mrs. James R. Courtney

MRS. MARY T. WALSH
LTC. Edward A. Walsh

PAT WALSH
Mr. & Mrs. Robert T. McElyea

AUBREY L. WALTERS
Mrs. Minnie L. Walters

E.B. WALTON, SR.
Phil D. O'Connell, Jr.

WILLIAM WANUS
Mrs. Helen Y. Marano

MRS. PELAGIA WARAKSA
Mr. & Mrs. John B. Hallam

JOSEPH A. WARD
Mr. & Mrs. Bushrod M. Clement

MARY VINCENTI WARD
Mr. & Mrs. Hugh J. Ward

ROY L. WARD, SR.
Mr. & Mrs. Roy L. Ward, Jr.

DONALD R. WARE
Mrs. Isabel S. Gatton

EUGENE WARNER
Mrs. George L. Shadburn

JESS WARREN
Mrs. Jane Shirley Warren

WILLIAM R. WATERS
Mr. & Mrs. Don Howell & David

DAN WATKINS
Mr. & Mrs. W.N. Purcell

MRS. W.F. WATSON
Mrs. Doris Watson
Mr. & Mrs. C. Covelle Brown

WILLIAM B. WATT
Ms. Margaret B. Watt

MRS. VIRGINIA WATTS
Mrs. Jessie H. Mason

CECIL M. WEBB
Mrs. Helen Webb

WALTER C. WECK
Mr. & Mrs. Harvey Bues

JOHN J. WEGNER
Mrs. John J. Wegner

WILLIAM J. WEHMEYER
Mrs. Veronica Wehmeyer

LUDWIG F. WEICHEL
Mrs. L.F. Weichel

MARY ANN WEIDMAN
Mrs. Merle P. Morton

MR. & MRS. CASPER WEILER
Mr. & Mrs. James Weiten

CARL V. WEIR
Mrs. Carl V. Weir

LESLIE CHRIS & JUDY WEISS
Mrs. Leslie C. Weiss

MR. & MRS. R.A. WELLMAN
Mr. & Mrs. W.B. Wellman

CHARLES R. WELLS
Ms. Rebecca F. Dewar

HELMER & RUTH WENBERG
Mrs. Elna B. Aymer

EUNICE N. WERTHEIM
L.J. Wertheim

ANTHONY P. WESOLOWSKI
Mrs. Harry Taylor

MRS. BESSIE HUTT WEST
John Law Ayers

ANNE J. WETMORE
Eugene S. Wetmore

MICHAEL KENT WHALEY
Mrs. Elna B. Whaley

STEVEN L. WHEALY
Mr. & Mrs. Roland A. Whealy

DR. LISLE WHEELER
Mr. & Mrs. Gerald R. Mark
Mr. & Mrs. Richard Banting
Mr. & Mrs. Philip Reber
Mr. & Mrs. Herbert Harris, Jr.
Mr. & Mrs. Harold J. Lee
Frank W. Engster
Mr. & Mrs. Albert Olson
Mr. & Mrs. Travers J. Graves
Mr. & Mrs. Frederick C. Schatz
Mr. & Mrs. Brendan T. Kelleher

DEWEY WHIDDEN
Mr. & Mrs. Charles B. Anderson, Jr.

REV. DR. H.C. WHITCOMB
Mrs. Christine R. Whitcomb

EDGAR R. WHITE
Mrs. Marie A. Sullivan

GEORGE WHITE
Mr. & Mrs. Paul J. Moore

MRS. PEGGY WHITE
Mr. & Mrs. A. Lee McGehee

VERA P. WHITE
O. Stuart White, Jr.

WILLIAM ELTON WHITE
Ms. Kathryn Killebrew

MRS. OLLIE J. WHITEHURST
Col. & Mrs. Frank M. Houlihan, Jr.

GRIERSON J. WHITESIDE
Mr. & Mrs. Donald H. Whiteside

LOUISE CARLTON WHITICE
Mr. & Mrs. Carl Carlton, Sr.

WILLIAM REED WHITING
Mr. & Mrs. Ralph M. Whiting

MRS. LOUISE WHITMAN
Richard N. Whitman

ALVAN M. WIEST
Mrs. Kathryn Wiest

MRS. EDNA V. WILCOX
Stephen Wilcox

WARREN WILCOX
Mr. & Mrs. E.A. Middlebrooks, Jr.

MRS. MIRIAM WILD
Maximilian Wild

FLOYD WILDER
Mr. & Mrs. Wyatt H. Folds
Mr. & Mrs. J.E. Batchelor

AMELIA J. WILKINS
Mr. & Mrs. George M. Wilkins

JESSE WILKINSON
Harold E. Randall

JAMES L. WILLARD
Mrs. Celia Willard

JAMES RICHARD WILLARD
Col. & Mrs. Louis A. Guessaz, Jr.

C.G. JERRY WILLIAMS
Mrs. June Williams

MRS. ETHEL BUSCH WILLIAMS
Mrs. Dorothy M. Jones

FRANK T. WILLIAMS
Mr. & Mrs. Harold P. Gregg
Ms. Marie A. Gregg

JOHN A. WILLIAMS, III
Mr. & Mrs. John Williams, Jr.

MRS. AIDA M. WILLIAMSON
Frederic A. Williamson

DENT WILLIAMSON
Mr. & Mrs. Bill Miller

FRANK W. WILLIAMSON, SR.
Mr. & Mrs. William E. Beaty

CHUCK WILLIFORD
Mr. & Mrs. J.A. Russell

WILLIAM C. WILLIS
Mrs. Gladys G. Willis

DOROTHY HELEN WILSON
Mrs. Edna Tichenor
Mr. & Mrs. Tom S. Heyward, Sr.

HENRY D. WILSON
Mrs. Ruth B. Wilson

RAYMOND WILSON
Mr. & Mrs. George W. Morris

HOMER E. WILT
Mrs. Dorothy A. Wilt

MRS. MARTHA C. WINQUIST
Douglas Winquist, Sr.
Mr. & Mrs. Douglas Winquist, Jr.

ALBERT M. WINSTON
Babe & Amy Grissom

ALBERT WINTZ
Mrs. Lois V. Wintz

JOSEPH M. WIPPER
Mr. & Mrs. Burton J. Chase

RONALD WISE
Mr. & Mrs. Virgil Q. Mayo

GEORGE W. WISSER
Mr. & Mrs. Leonard Gallatin

MRS. HELEN WITHERS
Rex C. Withers

MRS. CLARA E. WITT
Elmer A. Witt

MARIAN WOHLGAMUTH
Mr. & Mrs. Raymond G. Spellman

MR. & MRS. WOLF
Mr. & Mrs. George T. Jocher

MARGARET L. WOLFF
Mrs. May L. Harwood

HERBERT WOLFSON
Mrs. Herbert Wolfson

LEO WOMACK
Mr. & Mrs. Johnny McCullers

MRS. A.L. WOOD
Ms. Catherine Wood

FRANCES THAYER WOOD
Ms. Pauline F. Gabriel
Mrs. Harriette B. Anderson

ROSS WOOD
Mrs. Zella Wood

JAY WOODARD
Mrs. Ida Woodard

ROBERT E. WOODS
Mr. & Mrs. Robert A. Woods

MR. & MRS. J.M. WOODWORTH
Mr. & Mrs. Robert S. Foote

MRS. ROSA LEE WOOTEN
Mr. & Mrs. Oscar D. Wooten, Sr.

HENRY E. WORRELLS
Mrs. Ruth A. Worrells

MRS. MYRTLE L. WOUTERS
Harry E. Wouters

BRIAN CHRISTOPHER WREN
Mr. & Mrs. Rodney M. Wren

DR. JOSEPH E. WRIGHT
Mr. & Mrs. Henry O. Wright

R.T. WRIGHT
Mr. & Mrs. A.G. Stefurak
Mr. & Mrs. William M. Smith, Jr.

BETTY & BILL WURZBACH
Ms. Jacquelyn Swenson
Erik Swenson

MRS. HELEN WYCOFF
Mrs. Lula Mae Jones
Mr. & Mrs. Ed Fredholm
Mrs. Eva S. Wilson
Mr. & Mrs. W.J. Fairnington

DR. ROBERT S. WYNN
Mrs. Robert S. Wynn

X

CAPT. EVANGELOS XIGGOROS
Mr. & Mrs. Roger A. Weymans

Y

EVERETTE YATES
Mr. & Mrs. Ben M. Southard, Jr.

MRS. J. YERKES
Mr. & Mrs. Robert G. Klos

MRS. BERENICE YOUNG
John R. Wolniak
Sears Roebuck & Co. Midwest
Catalog Group #6582
Leo N. Young

HOWARD T. YOUNG
Mr. & Mrs. Levi A. Dickinson
Mr. & Mrs. Myron D. Johnson

JOSEPH J. YOUNG
Mrs. Joseph J. Young

YOUR BROTHER
Mrs. Beatrice D. Gorrell

YOUR DAUGHTER
Mr. & Mrs. James McCann

YOUR FATHER
Mrs. Jacquelyn D. Allman

YOUR FRIEND
Mrs. Hazel L. Magnuson

YOUR LOVED ONES
Mrs. Muriel V. Steinberg
Mr. & Mrs. William P. Synek
Mrs. William Harris
Mr. & Mrs. Casper B. Meder
Mr. & Mrs. Joseph Zobal, Jr.
Mr. & Mrs. Charles Denton Kirby
Mrs. William A. Scheig
Mrs. Kenneth E. Hughs
Mrs. Marcella L. McCauley
Mrs. Sarah L. Dawson

YOUR MOTHER
Leon H. Taylor
Miss Jean L. Simon

YOUR PARENTS
Mr. & Mrs. Henry E. Towle

YOUR SISTER
Mrs. Nettie Bradac

PAUL YOWELL
Mr. & Mrs. Carl Spence

MRS. ANN B. YUNG
Col. & Mrs. Marion J. Lawless

Z

HORACE W. ZALSMAN
Mrs. Kathryn L. Zalsman

HENRY A. ZANDER, JR.
Mrs. Ruth Billings

MARY & DENNIS ZANETTO
Julius Zanetto

LEONARD F. ZANGER
Mrs. Sophie B. Zanger

STANLEY ZARDECKI
Mrs. Amanda Zardecki

JACOB ZEMLOWITZ
Mr. & Mrs. Philip Rosefelt

WILLIAM ZIEGLER
Mrs. Norma A. Ziegler

HAROKLD ZIEMER
Mrs. Evelyn Ziemer

FLO ZIMMERMAN
Mrs. Mary S. Austin

MRS. WALT ZINZER
South Gate Park
Social Club

ELDON ZUERCHER, SR.
Mr. & Mrs. Bill Miller

PAUL & ELLA ZYDOR
Mr. & Mrs. Carl C. Lehr



HONOR GIFTS

A gift may be made to the Youth Fund in honor of a person and/or a special occasion, such as a birthday, anniversary, etc. If appropriate, and if a mailing address is provided, a letter of acknowledgment will be made to the person being honored. A listing of the donor and the person honored will appear in a future issue of THE RANCHER magazine, and, when address is provided, the person honored will receive a copy of the issue in which his or her name appears. In the listing below, the Honoree is listed first in all caps.

<p>ALL CLUB MEMBERS Jasmine Lakes Community Club, Inc.</p> <p>KENNY AUXIER HONORABLE DISCHARGE Mrs. Helen Auxier</p> <p>MR. & MRS. W.S. BADCOCK, JR. Mr. & Mrs. Jerold T. Slaughter</p> <p>RACHAEL KAKLAN'S BAT MITZVAH Mrs. Lee K. Bell</p> <p>MR. & MRS. RALPH BENNEHOFF, SR. CHRISTMAS Mrs. Mary M. Reck</p> <p>REV. & MRS. RICHARD BINGHAM APPRECIATION Mrs. Ferrol L. Bloomquist</p> <p>ED BLACKBURN Hon. & Mrs. Harold G. Featherstone Mr. & Mrs. Sydney K. Potter Mrs. William B. Stayer</p> <p>MR. & MRS. DAVID BOWEN CHRISTMAS Mr. & Mrs. Charles H. Masters</p> <p>BOYS & GIRLS Mrs. Emilie Clark Burns Charles A. Brantley</p> <p>BOYS RANCH 25th ANNIVERSARY Mrs. Hiede Tumillo Mr. & Mrs. E.G. Leachman Mr. & Mrs. Edward H. Lambert CWO Robert G. Grandinetti Mr. & Mrs. Vernon Hutchins</p> <p>BRIAN J. BUENNEKE CHRISTMAS Mrs. Marguerite C. Anderson</p> <p>SERGEANT BURCH Mr. & Mrs. Gregory W. St. Cyr</p> <p>DONALD BURKE BIRTHDAY Donald R. Burke</p> <p>SHERIFF & MRS. DALE CARSON Mr. & Mrs. Robert Michael Rieders Dr. S.D. Doff</p> <p>MRS. LILLIE M. CHATMAN BIRTHDAY Mrs. Lillie M. Chatman</p> <p>MY FOUR GREAT GRANDCHILDREN Mr. & Mrs. George F. Sipp</p> <p>CHRIST'S BIRTHDAY CHRISTMAS Miss Eda Jane Blackburn Mrs. Pearl E. Waldron Mr. & Mrs. James H. Dobson</p> <p>CHRISTMAS Mrs. Anne M. Bennett Mr. & Mrs. Orville B. Shafer William W. Roop</p>	<p>Carl Goldstein Mr. & Mrs. C.O. Wells Mrs. Gwyda Y. Borum Ms. Bernice M. Haynes Mr. & Mrs. James H. Ballard, Jr.</p> <p>BERNARD CITRON Mrs. Miriam Citron</p> <p>OSCEOLA HIGH TWELVE CLUB Mr. & Mrs. Griff Linsenmayer</p> <p>SHERIFF GERRY COLEMAN BEST SHERIFF Hon. H. Lawrence Jodrey</p> <p>MR. & MRS. FRANK COURSEY HOLIDAYS Mr. & Mrs. Murray Fidlow</p> <p>RAY B. COX BIRTHDAY Mr. & Mrs. John R. Voss</p> <p>MRS. RICHARD DAHLMAN BIRTHDAY Mr. & Mrs. Lewis F. Stern</p> <p>ST. LUCIE COUNTY DEPUTIES APPRECIATION Aaron Huston</p> <p>DINA THERESA DOLAN 3rd BIRTHDAY Mrs. Helen Y. Marano</p> <p>LARRY DUFF PROUD OF HIM Mr. & Mrs. Parvin Duff</p> <p>SERGEANT DUPREY Mr. & Mrs. Gregory W. St. Cyr</p> <p>RUTLEDGE J. EDGER, SR. 86th BIRTHDAY Rutledge J. Edger, Sr.</p> <p>MRS. BETTY ELLIOTT BIRTHDAY Mr. & Mrs. Gerald D. Priser</p> <p>MR. & MRS. MILTON FELLER Mrs. Martha Sinks</p> <p>MRS. MINNIE FINSTER Earl W. Redick</p> <p>FLORIDA SHERIFFS YOUTH FUND CHRISTMAS Mrs. Rose Bronson Elsey</p> <p>MR. & MRS. M.J. FORD FRIENDSHIP Mr. & Mrs. Paul J. Geis</p> <p>MR. & MRS. W.A. FRANTZEN 50th ANNIVERSARY Mrs. Esther Halvorsen</p> <p>HAROLD FRIEDMAN BIRTHDAY Mrs. Abner A. Wolf</p> <p>J. TED FYFFE BIRTHDAY James Theodore Fyffe</p> <p>DEPUTY CLYDE GALLO Mr. & Mrs. Larry Gasparini</p> <p>DOROTHY JORGENSEN GARVER Mrs. George C. Hansen</p>	<p>MR. & MRS. DONALD GENUNG Ms. Cozetta L. Patterson Miss Fran Zoller Mr. & Mrs. Dillon Knott Peter T. Lenas</p> <p>MR. & MRS. RALPH GRECO ANNIVERSARY Mrs. Ida Jo Webb</p> <p>GREAT GRANDCHILDREN & GRANDCHILDREN Mrs. Mabel C. Willmore Mr. & Mrs. Robert P. Garber Mr. & Mrs. William J. Sindlinger</p> <p>GREGORY J.B. GREENMAN Mrs. Helen W. Ebbert</p> <p>SARA ROSS GRUNWELL ANNIVERSARY William B. Grunwell</p> <p>ADELAIDA GUZMAN ANNIVERSARY Mrs. Carmen Mesa</p> <p>MR. & MRS. EDWARD HAUSMAN 50th ANNIVERSARY Miss Anna Taylor Ms. Wilhelmina A. Taylor</p> <p>DEPUTY TERRY HAYES Mr. & Mrs. Ralph Miller</p> <p>JAMI L. HELMAN 13th BIRTHDAY Mr. & Mrs. Max Helman</p> <p>MR. & MRS. JOHN P. HIGHLANDER Mr. & Mrs. Axel Hyttinen</p> <p>TEX T. HELDRETH LOVE Mr. & Mrs. Harry L. Tharpe</p> <p>SHERIFF L. J. HINDERY CHRISTMAS Tucker's Auto Repair</p> <p>MRS. WELLS HOWLAND CHRISTMAS Mr. & Mrs. Harry N. Ingraham</p> <p>MR. & MRS. WALTER HUGHES 50th ANNIVERSARY Mr. & Mrs. Fred Nimmons</p> <p>MAURICE & FRANCES JABOUR Richard Jabour</p> <p>WILLIAM G. JONES BIRTHDAY Mr. & Mrs. Kenneth R. Bayliss</p> <p>DETECTIVE THOMAS KINSELLA Mr. & Mrs. Ralph Miller</p> <p>SERGEANT KREMM KINDNESS Mr. & Mrs. Edgar Josephson, Jr.</p> <p>TREY LABRANT 21st BIRTHDAY Mr. & Mrs. Donald Labrant, Sr.</p> <p>MR. & MRS. E.M. LANDWEHR 61st ANNIVERSARY Mr. & Mrs. Everett M. Landwehr</p>	<p>MR. & MRS. LEON N. LAUCK CHRISTMAS Mr. & Mrs. Walter L. Lauck</p> <p>LAW ENFORCEMENT CDM William Siets Sr. Tim Callahan</p> <p>MICHAEL J. LENTINO BIRTHDAY Mr. & Mrs. Joseph Titone</p> <p>DEPUTY SHERIFF PETE LESCOE KINDNESS Mrs. J. Allan Smith, Jr.</p> <p>JACK & REBECCA LIEBERMAN 50th ANNIVERSARY Mr. & Mrs. Andrew L. Janes</p> <p>MR. & MRS. J.B. LYTLE CHRISTMAS Mr. & Mrs. Michael D. Riley</p> <p>JOE MACERA RECOVERY Lewis J. Schaul</p> <p>SHERIFF DON MORELAND Mr. & Mrs. Francis H. Hickey</p> <p>MR. & MRS. RICHARD MORRIS CHRISTMAS John L. D'Oyen</p> <p>DR. GORDON M. MOSS Mrs. Gertrude M. Goldberg</p> <p>ROSE L. NEWMAN CHRISTMAS Mr. & Mrs. Robert D. Prescott</p> <p>MRS. JANE OESCHER Mrs. Helen Auxier</p> <p>ALL SLAIN POLICE OFFICERS Thorsten W. Doll</p> <p>MRS. GENEVIEVE OLIVIER CHRISTMAS John L. D'Oyen</p> <p>ALL THE GOOD PEOPLE ON EARTH Mr. & Mrs. Ernest Hewey</p> <p>WILLIAM PALMER Bernard L. Palmer</p> <p>MR. & MRS. HAROLD PANSY ANNIVERSARY Mrs. Robert & Diane Blank</p> <p>FORMER SHERIFF BYRD PARKER Mr. & Mrs. Hugh H. Semmes</p> <p>FRANK PARRISH BIRTHDAY William H. Parrish</p> <p>MICHAEL PAUL George E. Johnson</p> <p>ALBERT & BARBARA PAYNE ANNIVERSARY Mrs. Barbara Niess</p> <p>PEARL HARBOR LOST LIVES Mr. & Mrs. Joseph Mueheh</p> <p>EDESEL LAMONT PELAEZ GOOD SON Joseph G. Pelaez</p>	<p>NANCY F. PILCHER Mrs. Katharine B. Teale</p> <p>MR. & MRS. ARTHUR PILKINGTON 39th ANNIVERSARY Mr. & Mrs. Arthur Pilkington</p> <p>MR. & MRS. WILLIAM POU Mr. & Mrs. Jerold T. Slaughter</p> <p>W. D. ROBERTS 80th BIRTHDAY Ms. Leigh Frizzell</p> <p>JANET ROBINSON BIRTHDAY Harold Robinson</p> <p>EDNA RODRIGUEZ BIRTHDAY Mr. & Mrs. Delio Rodriguez</p> <p>DEPUTY GARY ROHN Ms. Bobbie Brassard</p> <p>HERBERT & DOROTHY ROTH HOLIDAYS Mr. & Mrs. William Bader</p> <p>REV. & MRS. S. HARRY RUSSELL FRIENDSHIP Mr. & Mrs. Clem E. McGlocklin, Jr.</p> <p>ST. JOHN'S LODGE NO. 37 F. & A.M. 100 YEARS Mr. & Mrs. Francis Nield</p> <p>SAINT JUDE Mr. & Mrs. Robert C. Baez</p> <p>SANTA CLAUS Mr. & Mrs. Frederick C. Doepke</p> <p>DR. FRANK SCOTT G.K. Ely</p> <p>HILLSBOROUGH COUNTY SHERIFF'S DEPT. Mr. & Mrs. Paul Reed</p> <p>COLLIER COUNTY SHERIFF'S DEPT. APPRECIATION Mr. & Mrs. John W. Weaver</p> <p>SARASOTA COUNTY SHERIFF'S DEPT. Mrs. Gail E. Sharrer</p> <p>HERNANDO COUNTY SHERIFF'S DEPUTIES Mr. & Mrs. Fred Martin</p> <p>FLO C. SINCLAIR THANKS Mr. & Mrs. George H. Sinclair</p> <p>MR. & MRS. H.K. SMITH CHRISTMAS Ms. Vivienne Hall</p> <p>MRS. ELSIE SMITH BIRTHDAY Mrs. Elsie Smith</p>	<p>DOUGLAS SPRINTHALL 100th BIRTHDAY Mrs. Frances E. Bogert</p> <p>AUDREY STAHL CHRISTMAS Mr. & Mrs. Ronald Herbstreit</p> <p>JOSEPH STANCO BIRTHDAY Mr. & Mrs. Joseph Stanco</p> <p>MR. & MRS. ALEXANDER STANTON 50th ANNIVERSARY Mr. & Mrs. J.C. Sharp</p> <p>THE HOMEOPATHIC SYSTEM OF MEDICINE ANNIVERSARY Mr. & Mrs. Henry O. Wright</p> <p>THANKSGIVING Mrs. J. Henry Jacobs Mr. & Mrs. Robert C. Baez</p> <p>MARIETTA TRAWCZYNSKI BIRTHDAY John F. Trawczynski</p> <p>ELWOOD B. TRUEBLOOD BIRTHDAY Mr. & Mrs. Elwood B. Trueblood</p> <p>BARBARA GOODNIGHT VAN CAMP Mr. & Mrs. Lyman E. Good- night, Jr.</p> <p>K. R. WARD BIRTHDAY Mr. & Mrs. Kenneth H. Ward Mr. & Mrs. Lester Richardson</p> <p>SHERIFF'S PHONE WATCH John H. Egley</p> <p>HARRY K. WEAVER Thomas Lacey</p> <p>SHERRI WELLS 16th BIRTHDAY Harry Stine</p> <p>MR. & MRS. CLYDE E. WHITE 49th ANNIVERSARY Mr. & Mrs. Clyde E. White</p> <p>GREGORY D. WIBLE BIRTHDAY Mrs. Wilma J. Litten</p> <p>MRS. HELENE S. WISE BIRTHDAY Norman B. Wise</p> <p>JOSEPH & SALLY WITTEKIND THANK YOU Ms. Joyce Fox</p> <p>SHERIFF W.A. WOODHAM EFFICIENT SERVICE Mr. & Mrs. A.G. Driggers</p> <p>YOUR ANNIVERSARY Mr. & Mrs. Arthur J. Robidoux</p>
--	---	--	--	--	---

"I Don't Know How You Did it!"

From South Florida came the following letter accompanied by a generous check. (The name of the Boys Ranch resident has been changed to protect his identity.)

"My nephew, Joby, who lives at the Boys Ranch, has undergone a wonderful transformation in the last year. It was really a pleasure to spend some time with him. He has become a perfectly normal, healthy and courteous, little boy.

"In Miami, he was an abused and delinquent child, clearly heading for serious trouble. I have never seen such a change in behavior and attitude. I don't know how you did it, but you have our deep, grateful, sincere appreciation.

"I enclose a check for your program, which must be the worthiest of all charities if it helps other children as it did Joby."



A Visit from a Longtime Friend

A visit from Congressman Don Fuqua and his wife, Nancy, on October 28, was one of the highlights of 1982 at the Florida Sheriffs Boys Ranch. Fuqua brought with him as a gift an American flag that had flown over the U.S. Capitol on October 2, 1982, the 25th Anniversary of the founding of the Boys Ranch. It was raised on the Boys Ranch flagpole in a brief ceremony, and then a barbecue dinner was held in Fuqua's honor. The Congressman has been a Boys Ranch booster for many years, and formerly served on the Boys Ranch Board of Trustees.



Congressmen are usually preoccupied with the state of the nation, but for this one night it was the state of the Boys Ranch that Fuqua discussed with a group of Ranchers.



Ranchers expressed their appreciation by presenting a Boys Ranch Cap, bolo tie and T-shirt to the Congressman.



Fuqua in the barbecue serving line with (from left) Wrestling Impresario Eddie Graham, Florida Sheriffs Youth Fund Attorney Gayle Swedmark and Florida Sheriffs Association General Counsel Jack Madigan.

Florida Sheriffs Youth Fund
Boys Ranch, Florida 32060
Address Correction Requested

NON-PROFIT ORG.
U.S. POSTAGE
PAID
Florida Sheriffs Youth Fund